

SUI04

Ultrasonic Sensor Instruction Manual



CE FCC ROHS

* Please be kindly noted that this manual will be updated regularly and please visit RadioLink official website to download the latest version.

Thank you for purchasing RadioLink Ultrasonic Sensor-- SUI04.

To fully enjoy the benefits of this product and ensure safety, please read the manual carefully and set up the device as instructed steps.

If any problems found during the operation process, either way listed below can be used as online tech support.

1. Send mails to after_service@radiolink.com.cn or after_service1@radiolink.com.cn and we will answer your question at the earliest.
2. PM us on our Facebook page or leave comments on our Youtube page
3. If the product is purchased from the local distributor, you can also ask them for support and repair as prefer.

All manuals and firmwares are available on RadioLink official website www.radiolink.com and more tutorials are uploaded. Or follow our Facebook and Youtube homepage to stay tuned with our latest news.



SAFETY PRECAUTIONS

- Never operate models during adverse weather conditions. Poor visibility can cause disorientation and loss of control of pilots' model.
- Never use this product in a crowd or illegal areas.
- Always check all servos and their connections prior to each run.
- Always be sure about turning off the receiver before the transmitter.
- To ensure the best radio communication, please enjoy the flight/driving at the space without interference such as high voltage cable, communication base station or launching tower.

WARNING

This product is not a toy and is **NOT** suitable for children under the age of 18. Adults should keep the product out of the reach of children and exercise caution when operating this product in the presence of children. Water or moisture may enter the transmitter inside through gaps in the antenna or joystick and cause model instability, even out of control. If running in the wet weather (such as game) is inevitable, always use plastic bags or waterproof cloth to cover the transmitter.

FCC Statement

This equipment has been tested and found to comply with the limits for a Class B digital device, pursuant to Part 15 of the FCC Rules. These limits are designed to provide reasonable protection against harmful

interference in a residential installation. This equipment generates uses and can radiate radio frequency energy and, if not installed and used in accordance with the instructions, may cause harmful interference to radio communications. However, there is no guarantee that interference will not occur in a particular installation. If this equipment does cause harmful interference to radio or television reception, which can be determined by turning the equipment off and on, the user is encouraged to try to correct the interference by one or more of the following measures:

- Reorient or relocate the receiving antenna.
- Increase the separation between the equipment and receiver.
- Connect the equipment into an outlet on a circuit different from that to which the receiver is connected.
- Consult the dealer or an experienced radio/TV technician for help.

This device complies with part 15 of the FCC Rules. Operation is subject to the following two conditions:

(1) This device may not cause harmful interference, and (2) this device must accept any interference received, including interference that may cause undesired operation.

Changes or modifications not expressly approved by the party responsible for compliance could void the user's authority to operate the equipment.

Introduction :

SUI04 is a ultrasonic ranging sensor transceiver and compatible with PIXHAWK and MINI PIX. It helps drones achieve autonomously omnibearing obstacle avoidance including 4 horizontal directions, upward side and altitude hold downward. The detection distance of SUI04 is 40cm to 450cm.

Function One: Obstacle Avoidance

I. Firmware support

The firmware of the obstacle avoidance function needs to be downloaded from the link below, and then uploaded to the flight controller on Mission Planner. Other versions of firmware cannot be used! ! (The following firmware is modified from Firmware Copter V3.5.7. After installing the firmware, the previous functions and parameters will remain unchanged, and there is no need to re-calibrate)

SUI04 Firmware for Obstacle Avoidance Function:

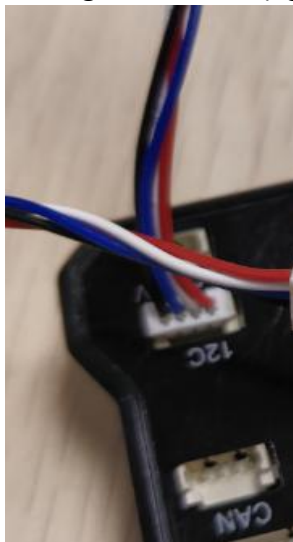
https://www.radiolink.com/sui04_firmware

II. How to connect

2.1 With PIXHAWK

2.1.1 Individually with PIXHAWK

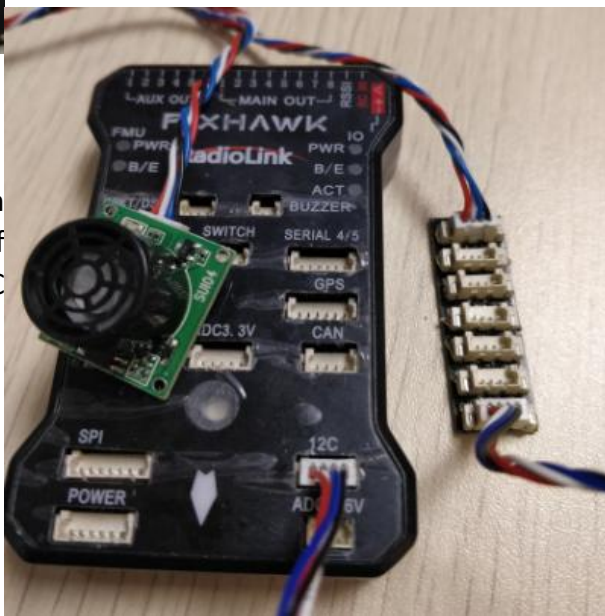
Connecting the module (eg. SUI 04) and the I2C port of PIXHAWK with a 4 pin to 4 pin wire



2.1.2

I2C wiring board

2 wires of 4 pin to 4 pin connecting I2C port of one for connecting I2C



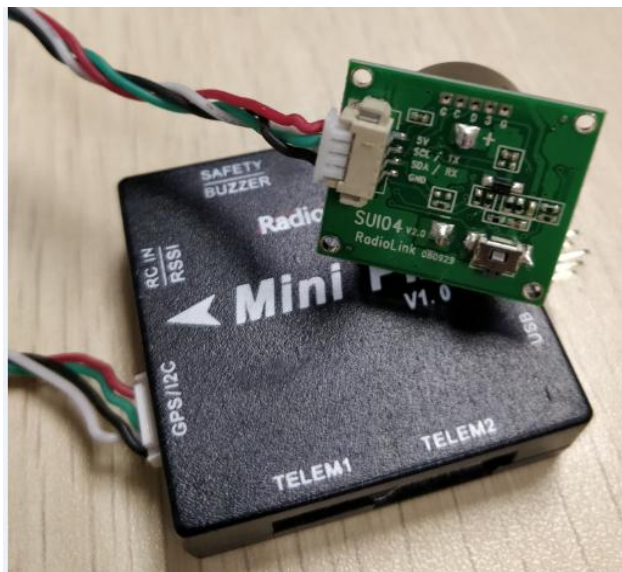
Connecting with PIXHAWK by are needed: one for PIXHAWK and I2C wiring board; wiring board and SUI04

2.2 With MINIPIX

WARNING: NO memory card inside.

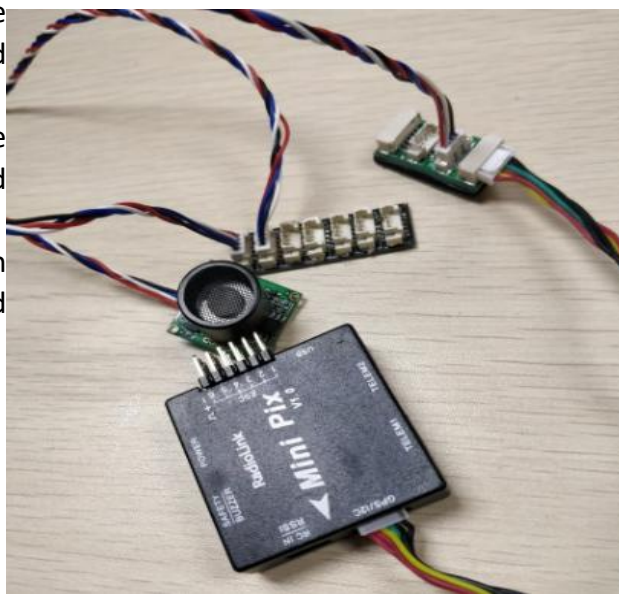
2.2.1 Individually with MINIPIX

A 4 pin to 6 pin wire is needed: the 4 pin end to SUI04 and the 6 pin end to the GPS port of MINIPIX



2.2.2 Connecting with MINIPIX by I2C wiring board

1. Take a 6 pin to 6 pin wire with one end to the GPS port of MINIPIX and the other end to the I2C expansion board.
2. Take a 4 pin to 4 pin wire with one end to the I2C expansion board and the other end to the wiring board.
3. Take another 4 pin to 4 pin wire with one end to the I2C wiring board and the other end to the SUI04



with one end to the one end to the I2C

with one end to the one end to the I2C

wire with one end to one end to the

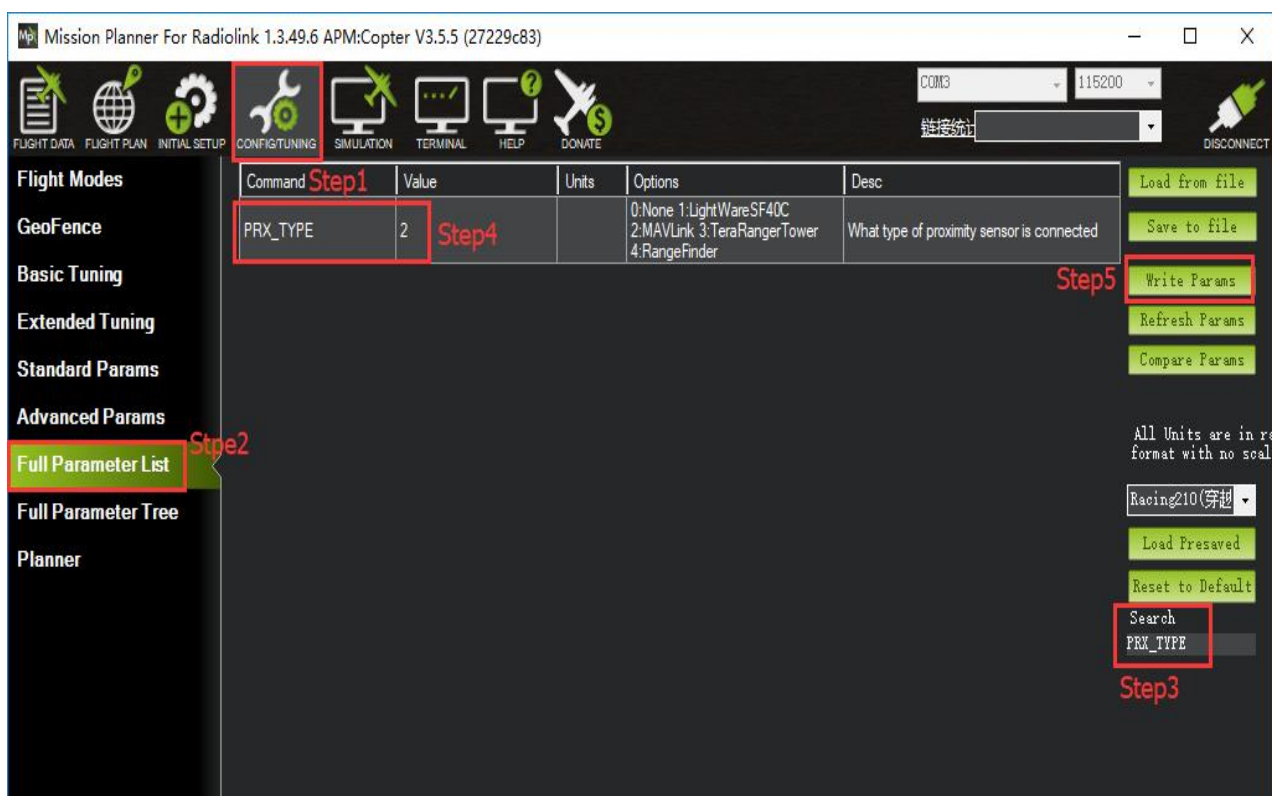
III. Parameters Setup

3.1 Module type setup

PIXHAWK support four kinds of obstacle avoidance modules. SUI04 can be chosen by setting the value of **PRX_TYPE** in Mission Planner(MP).

Setting steps:

- 1) Choose CONFIG/TUNING on the top of the interface.
- 2) click "Full Parameter List" on the left.
- 3) Input "PRX_TYPE" (obstacle avoidance module type) in search column at the lower right corner and press "Enter" .
- 4) As the searched proximity sensor type shown in the MP, change the proximity sensor type value to 4 (that is , the chosen module type is Range Finder,which is SUI04).
- 5) Click "Write Params" on the right to save the parameters when the setting is complete.



3
.2
Setup
the
avoid
ance
distan
ce
and
the
avoid
ance
enabl
e/disa

ble

The avoidance distance of ultrasonic sensor SUI04 can be changed by setting the value of **AVOID_MARGIN**.

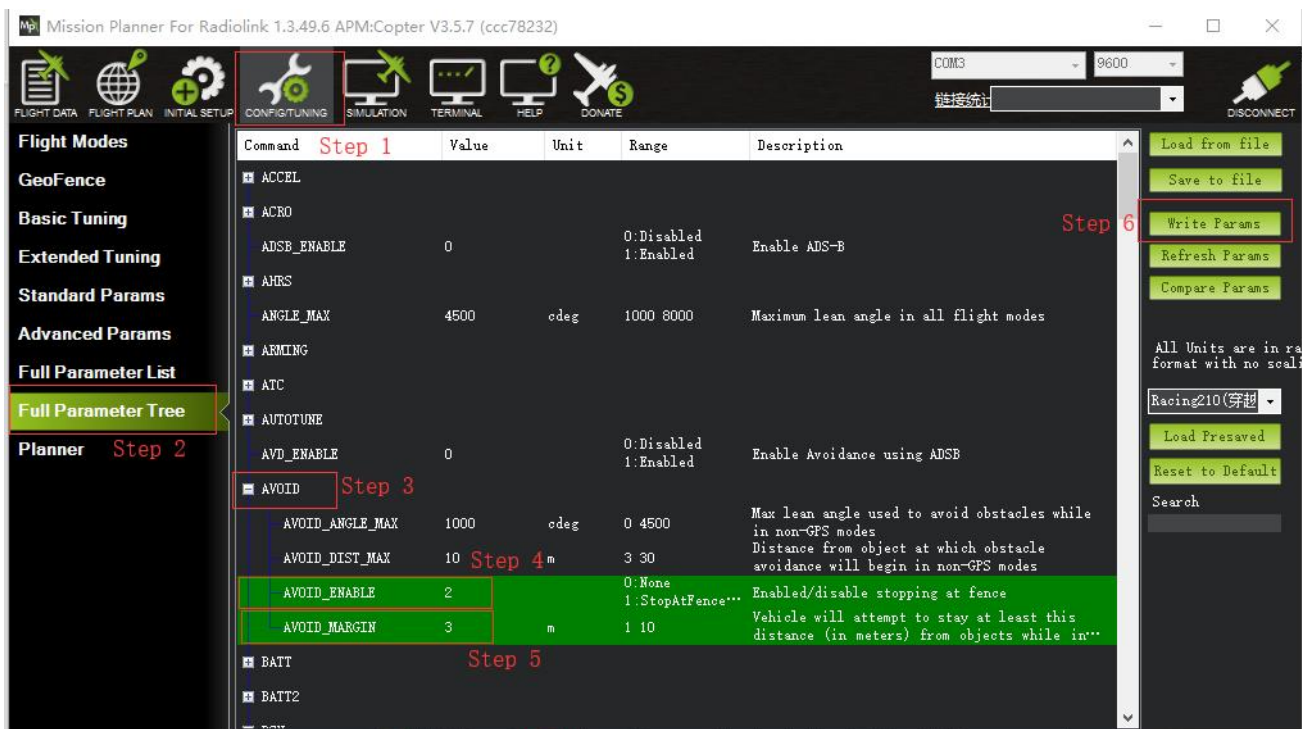
AVOID_MARGIN: the max avoidance distance at LoiterMode, the unit is meter

The avoidance enable/disable of ultrasonic sensor SUI04 can be set by changing the value of **AVOID_ENABLE**.

AVOID_ENABLE: the value of AVOID_ENABLED(options is None) means the avoidance function is off and the value 2(options is Use Proximity Sensor) means the avoidance function is on.

Parameters Setting Steps on MP:

- 1) Choose CONFIG/TUNING on the top of the interface
- 2) Click "Full Parameter Tree"
- 3) Click the "AVOID", the parameters of "AVOID_ENABLE" and "AVOID_MARGIN" are shown
- 4) Set the value of the AVOID_ENABLE 2(use proximity sensor) means make avoidance sensor enable
- 5) Set the value of AVOID_MARGIN 3(3 meters, the effective value is from 1 to 10) means vehicle will attempt to stay at least in 1 to 10 meters from objects while in GPS modes.
- 6) Click "Write Params" on the right to save the parameters when the setting is complete.



3.3 How to Enable/Disable the avoidance function by transmitter(Optional)

This setup depends on users' habit and is optional.

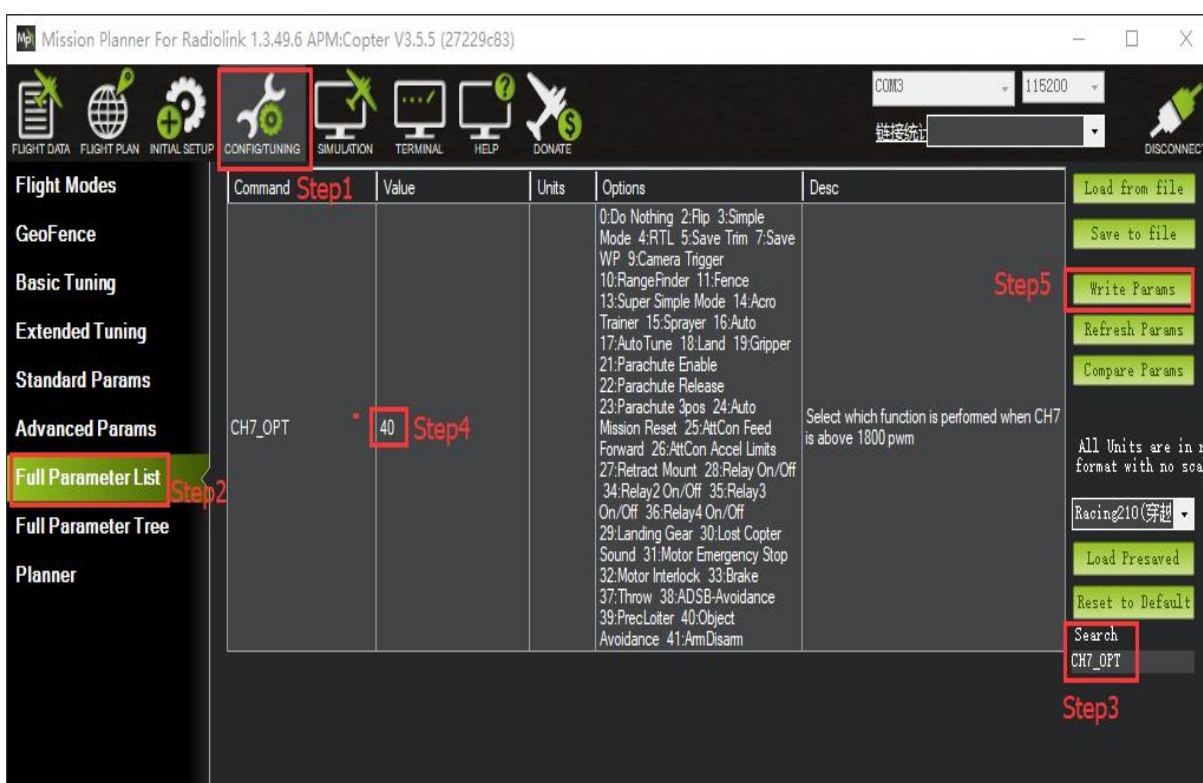
The avoidance function of flight controller is always automatically enabled a *LoiterMode* by default and disabled if change to Stabilize Mode.

If users prefer enabling/disabling the avoidance function by transmitter, setup in the Mission Planner as

Below steps is necessary.

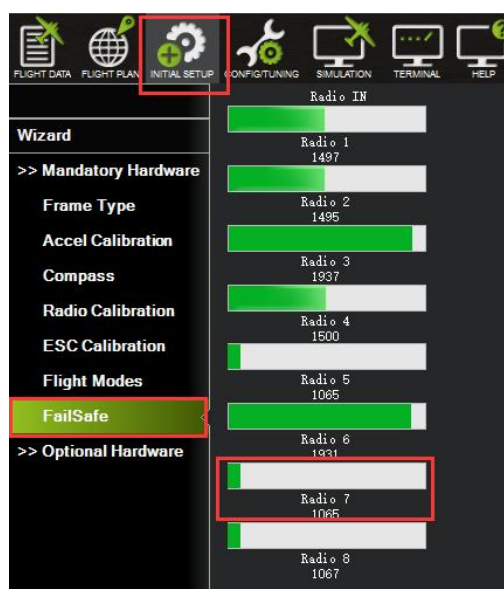
Flight Controller Setting steps (CH7_OPT Parameters):

- 1) Choose CONFIG/TUNING on the top of the interface
- 2) click "Full Parameter List" on the left
- 3) Input "CH7_OPT" (choose the CH7 to make the avoidance function enable or disable) in search column at the lower right corner and press "Enter"
- 4) As the searched CH7_OPT shown in the MP, change the value to 40 (Object Avoidance).It means switchon/off CH7 enable/disable the avoidance function.
- 5) Click "Write Params" on the right to save the parameters when the setting is complete.



Transmitter setting steps

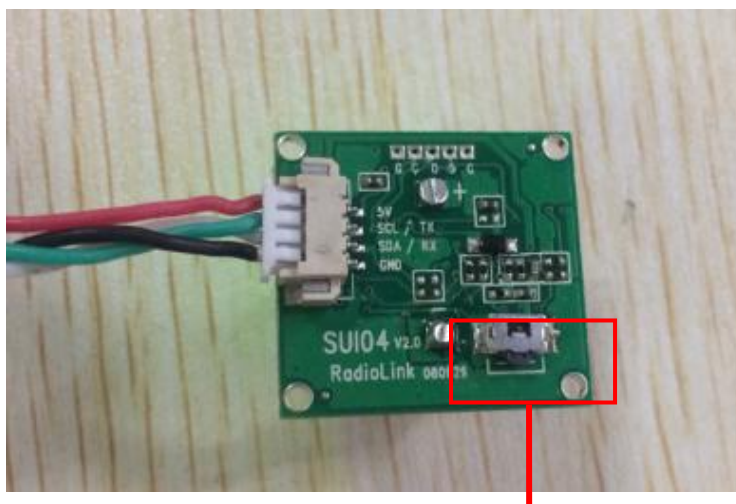
- 1) Choose a 2-position switch(the SWA of AT9S for example) to control CH7
- 2) Choose INITIAL SETUP on the top of the interface
- 3) Click " FailSafe " in the pull-down menu of the left and the PWM value of CH7 is shown
- 4) Toggle the switch. If the PWM 1800, it means the avoidance function is enabled when the position. If the PWM value of CH7 is more than 1800, it means the avoidance function is disabled when the switch is at the bottom position.



top of the interface pull-down menu of the left and the PWM value of CH7 is more than 1800, it means the avoidance function is enabled when the position. If the PWM value of CH7 is more than 1800, it means the avoidance function is disabled when the switch is at the bottom position.

4. Button Functions of SUIO4

Flight controller PIX can simultaneously support 6 modules (eg. SUIO4) including front/back/left/right/upward/downward. So the direction of each module should be set. Every press on the button, the module direction changes once accordingly clockwise and the module LED flashes. Different flash frequencies means different directions. Once-Front, Twice-Right, 3 Times-Back, 4 Times-Left, 5 Times-Downward, 6 Times- Upwards.



(Press this button to change the direction of obstacle avoidance, it will rotate 90 degree clockwise when press the button once.)

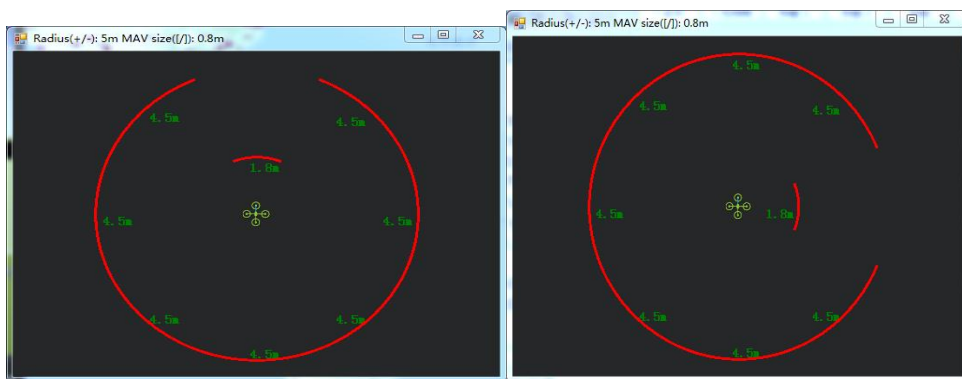
NOTICE: Every direction changed, the flight controller and the module need to be restarted.

5.Data Check

As the data of the latest official MP is not well shown, it's suggested to download the Mission Planner specially for MINIPIX to check data.

<http://www.radiolink.com.cn/firmware/MissionPlanner/MissionPlanner-1.3.49.6.exe>

After the above setups are complete, the SUIO4 data can be checked on MP. Disconnect the PIXHAWK and restart the Mission Planner. When the MP is connecting, a new interface (as shown below) will come out automatically and the working condition of SUIO4 can be checked . If it doesn't come out, please click the icon at the task bar on the desktop.

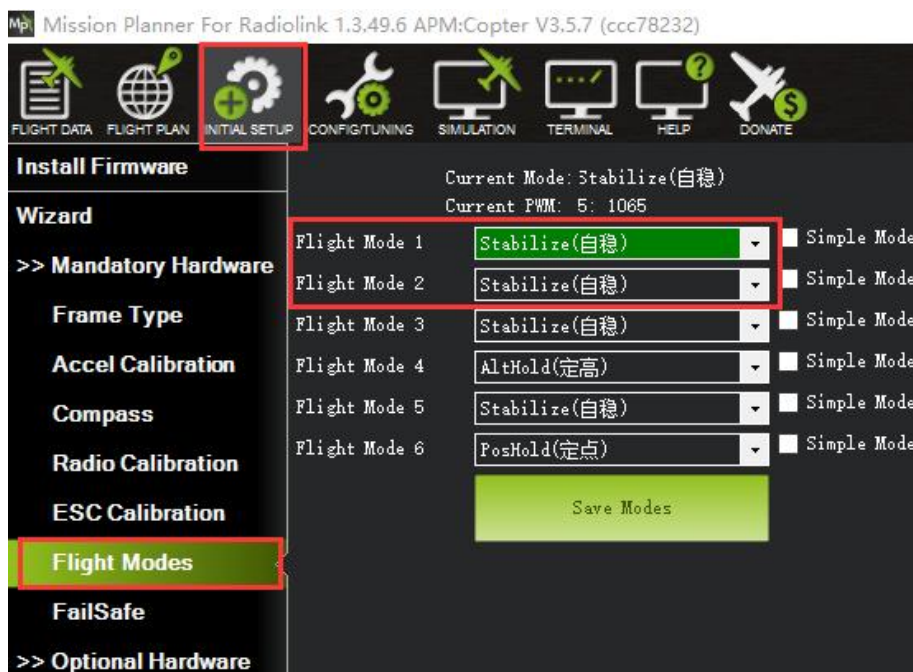


(Current direction: Forward)

(Current direction: Right)

6. Flight Modes

Flight modes need to setup after the parameters of PIXHAWK have been set and the Ultrasonic Sensor SUI04 works , the basic flight modes include 1: Stabilize, 2: Loiter.



7. Working Condition

WARNING:Reconnect the PIXHAWK and restart the MP after following all the above steps to ensure the successful parameters setup for failsafe.

After verifying all the parameters setup, it' s strongly suggested to find a large place with walls or other obstacles to have a test when ready for the first flight.

Flight testing steps:

- 1) Power on the drone and wait till the blue LED of PIXHAWK blinks,meaning the initialization of PIXHAWK is complete.
- 2) Press the safety switch about 1 to 2 seconds till the red LED of PIXHAWK is on when the blue LED of PIXHAWK is blinking.
- 3)Unlock the drone and the motors will begin to move if armed successfully. Push the throttle stick slowly, change the flight mode to Loiter when the drone takes off.
- 4) Toggle the CH7-SWA(or any other 2 position switch, it depends on which you setup at the very beginning) to turn on

the avoidance function.

- 5) Push the throttle and aileron sticks to make the drone close to the wall/obstacle, the drone will control the racing speed and stopped at the 3 meters far from the wall/obstacle automatically. If the flight speed is too high and the distance to the wall/obstacle is less than 3meter because of the inertia, the drone will stay at 3 meters away from the wall or obstacle automatically.

Notice: To unlock a drone, put the throttle stick to the bottom right corner if the transmitter is Mode2. Or put the throttle stick to the bottom left corner and the aileron stick to the bottom right if your transmitter is Mode1

8. Notices:

- ① No memory card allowed when connecting MINIPX.
- ② Avoidance function is automatically enabled when at Alt-Hold Mode. If needs to be disabled, please follow the above steps and change the value of AVOID_DIST_MAX to 0 in Param Setup in MP.
- ③ Never enable the avoidance function of SUI04 at Alt-Hold Mode but Loiter Mold.

(At Alt-hold mode, when the drone encounter obstacles, its slant angle will combine pitch with roll then response.It may be too late to stop if the drone is at full speed. But at Loiter Mode, the drone will stop immediately when encounter an obstacle no matter how big both the pitch and roll are. So, it' s suggested use the horizontal obstacle avoidance function at the Loiter Mode.)

- ④ When obstacles detected, the LED of SUI04 is always on; When no obstacle detected, the LED of SUI04 keeps flashing.
- ⑤ If connection is successfully done, the LED of SUI04 will flash 4 to 6 times and be off when power on.Then always on after the initialization.
- ⑥ Be sure to avoid the interference from propellers and frame to signals when connecting the flight controller.
- ⑦ As SUI04 is a transceiver, there is a blind area of 40cm, including the area less than 40cm.
- ⑧ Only the distance of horizontal directions can be checked on the data check interface. When there' s no distance shown, the current direction of SUI04 may be upward, which can be checked on DataFlash Logs.

9. Errors Report on Mission Planner

- 1) MP note: Bad LiDAR Health, as shown below



The ultrasonic shown in the above pic is under unusual working condition. The possible reasons are:

- PRX_TYPE value is set wrong
 - PRX_TYPE value is set 4, but SUI04 is not connected. If SUI04 need to be turned off, PRX_TYPE value should be set 0.
 - SUI04 connect incorrectly
- 2) MP note: PreArm: Proximity X deg, 0.40m, as shown below



The above screenshot shows SUI04 detects the distance less than 60cm and is locked by the flight controller. To armed SUI04, the distance between the drone and obstacles should be more than 60cm.

Function Two: Collision Avoidance Upward

The collision avoidance upward function is same as the obstacle avoidance function, the direction of SUI04 upward can be setup by pressing the same button.

Press the button 6 times and the LED flashes 6 times, and the direction of SUI04 is set upward.

The corresponding distance of collision avoidance can be set by the value of AVOID_MARGIN as the previous steps instructed.

As only the horizontal distances are available on the data check interface, upward data can be checked on DataFlash Logs.

1) DataFlash

Connect the with MP and steps to DataFlash



Logs Download flight controller follow the below download Logs

Click the logs and download



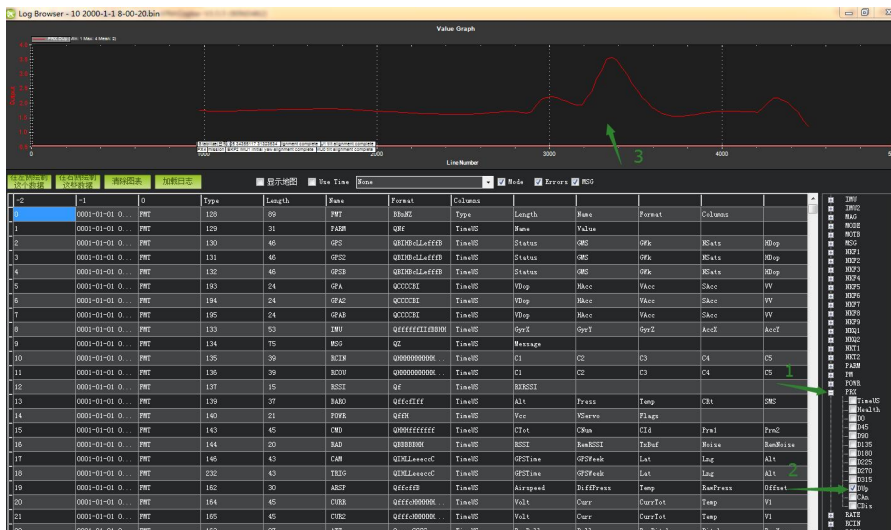
2) Log check

Open the log files

Click the log review and open the log



Follow the Step 1 and Step 2 shown in below pic:



(The data that arrow points to means the distance that SUI04 detects.)

Function Three: Alt-Hold Function Downward

I. How to Connect

The Alt-Hold downward function is same as the obstacle avoidance function, the direction of SUI04 downward can be setup by pressing the same button.

Press the button 5 times and the LED flashes 5 times, and the direction of SUI04 is set downward.

1.1 With PIXHAWK

1.1.1 Individually with PIXHAWK

Connect SUI 04 and the I2C port of PIXHAWK with a 4 pin to 4 pin wire



1.1.2 Connecting with PIXHAWK by I2C wiring board

2 wires of 4 pin to 4 pin are needed: one for connecting I2C port of PIXHAWK and I2C wiring board; one for connecting I2C wiring board and SUI04



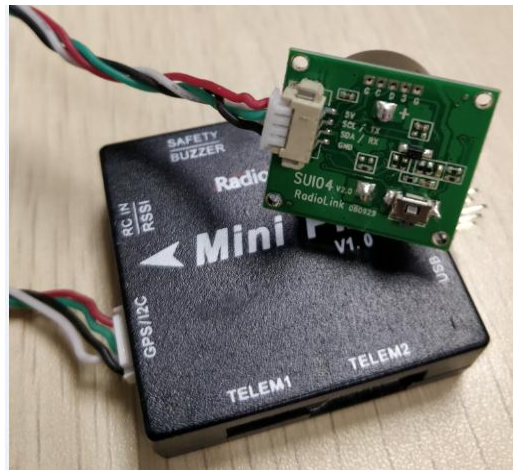
1.2 With MINIPIX

WARNING: NO memory card inside.

1.2.1 Individually with MINIPIX

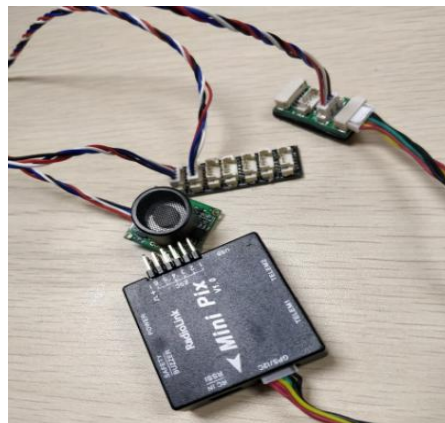
A 4 pin to 6 pin wire is needed: the 4 pin end to the module (eg. SUI04) and the 6 pin

end to the GPS port of MINIPIX



1.2.2 Connecting with MINIPIX by I2C wiring board

1. Take a 6 pin to 6 pin wire with one end to the GPS port of MINIPIX and one end to the I2C expansion board.
2. Take a 4 pin to 4 pin wire with one end to the I2C expansion board and one end to the I2C wiring board.
3. Take another 4 pin to 4 pin wire with one end to the I2C wiring board and one end to the SUI04



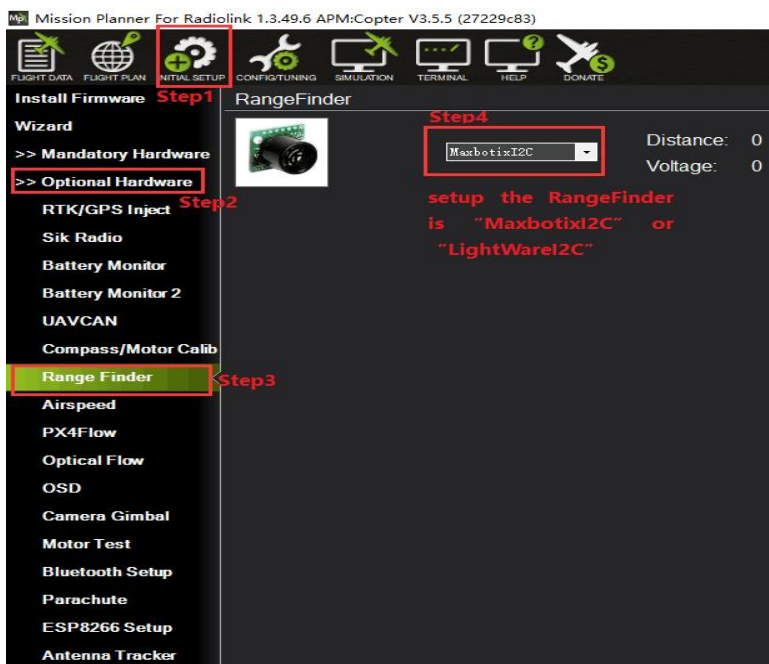
The alt-hold function is same as the obstacle avoidance function, the direction of SUI04 downward can be setup by pressing the same button.

Press the button 5 times and the LED flashes 5 times, and the direction of SUI04 is set upward.

II. Parameters Setup

2.1 Module type setup:

- 1) Click "INITIAL SETUP" on the top
- 2) Click "Optional Hardware" on the left
- 3) Click "Range Finder" and the RangeFinder interface is on the right
- 4) Click the pull-down menu and choose "MaxbotixI2C" or "LightWareI2C"



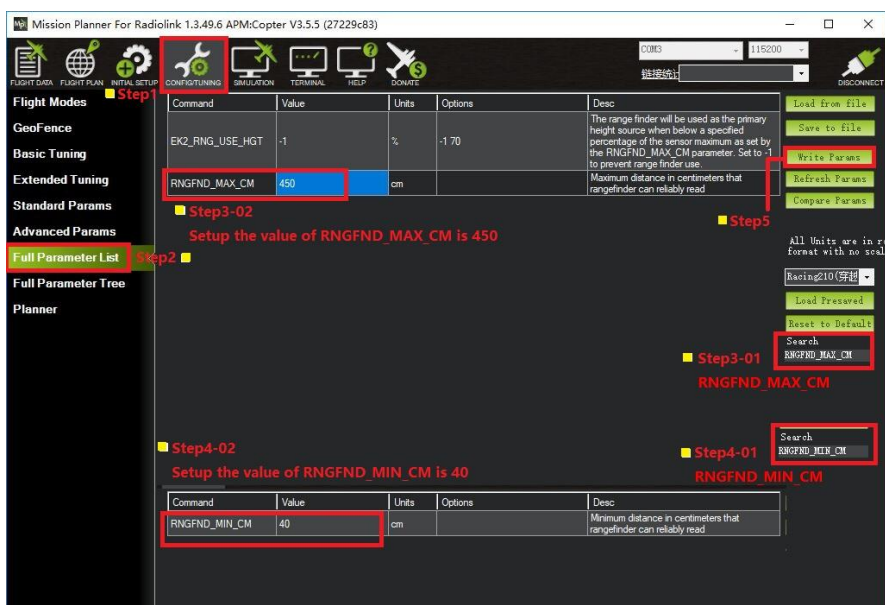
After the Range Finder setup, restart the flight controller and back to this Range Finder setup menu, the shown detection distance details means the parameters setup is complete.

2.2 Setting steps:

- 1) Choose CONFIG/TUNING on the top of the interface
- 2) Click "Full Parameter List" on the left
- 3) Input "RNGFND_MAX_CM" and "RNGFND_MIN_CM" in search column at the lower right corner and press "Enter"
- 4) As the searched the two items shown in the MP, change RNGFND_MAX_CM value to 450cm and RNGFND_MIN_CM value to 43 cm
- 5) Click "Write Params" on the right to save the parameters when the setting is complete.

RNGFND_MAX_CM is the detectable max distance of flight controller at Alt-Hold Mode

RNGFND_MIN_CM is the detectable min distance of flight controller at Alt-Hold Mode



2.3 How to Enable/Disable the Alt-Hold function by transmitter(Optional)

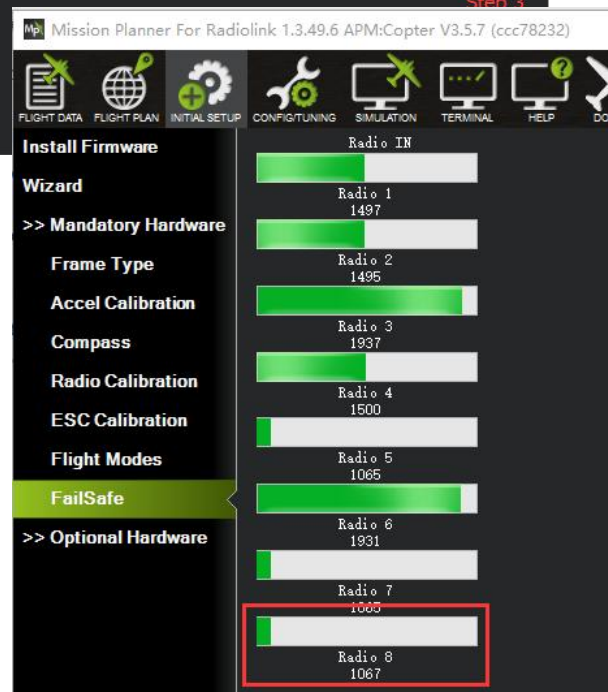
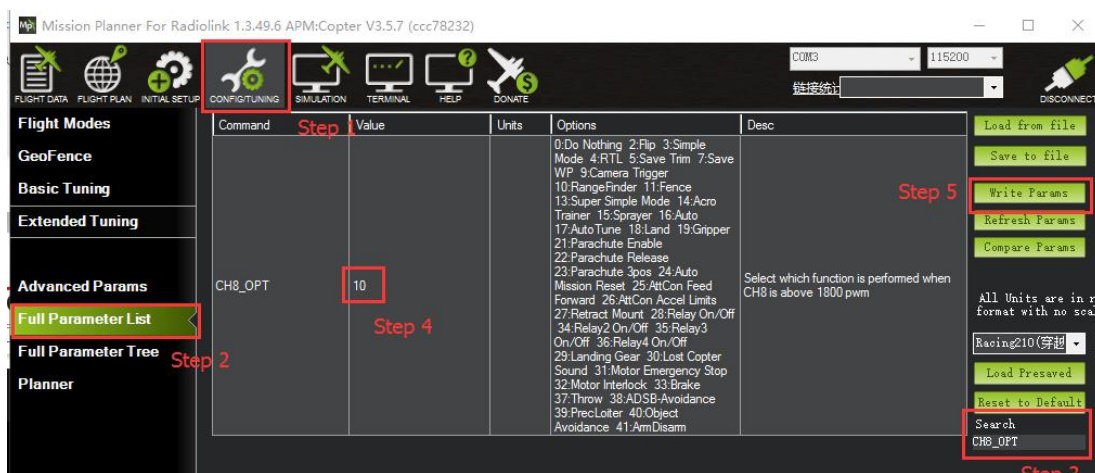
This setup depends on users' habit and is optional.

The Alt-Hold function of SUI04 is always automatically enabled at Alt-Hold Mode and Post-Hold Mode by default and disabled if change to Stabilize Mode.

If users prefer enabling/disabling the Alt-Hold function by transmitter, setup in the Mission Planner is necessary.

Flight Controller Setting steps (CH8_OPT Parameters):

- 1) Choose CONFIG/TUNING on the top of the interface
- 2) Click "Full Parameter List" on the left
- 3) Input "CH8_OPT" (choose the CH8 to make the Alt-Hold function enable or disable) in search column at the lower right corner and press "Enter"
- 4) As the searched CH8_OPT shown in the MP, change the value to 10 (Object Alt-Hold). It means switch on/off CH7 enable/disable the avoidance function.
- 5) Click "Write Params" on the right to save the parameters when the setting is complete.



Transmitter settings

- 1) Choose a 2-position switch to control CH8
- 2) Choose INITIAL SETUP on the top of the interface of MP
- 3) Click "FailSafe" in the pull-down menu of "Mandatory Hardware" on the left and the interface of CH8 PWM value is shown
- 4) Toggle the switch. If the PWM value of CH8 is more

than 1800, it means the Alt-Hold function is enabled when the switch is at the bottom position. If the PWM value of CH8 is less than 1800, it means the Alt-Hold function is disabled when the switch is at the top position.

Specifications

- Size: 20*22*19mm
- Weight: 8g (with wires)
- Input voltage: 4.5~5.5V(do not support HV)
- Current: 18mA@5V
- Power: 90mA
- Operating temperature: -20°C~80°C
- Detection distance: 40cm~450cm
- Detecting precision: 0.1cm
- Acoustic emission frequency: 40 ± 1.0 KHz
- Beam angle: 60° (transmitting receiving hybrid)
- Fade area: 0 (it will show 40cm)
- Output protocol: I2C
- Duty Cycle: 30ms

Set CrossFlight and SUI04

Contents

Chapter 1. Connect SUI04 to CrossFlight	1
1.1 Connect SUI 04 to CrossFlight GPS port directly.....	1
1.2 Connect SUI 04 to CrossFlight by I2C transfer board.....	1

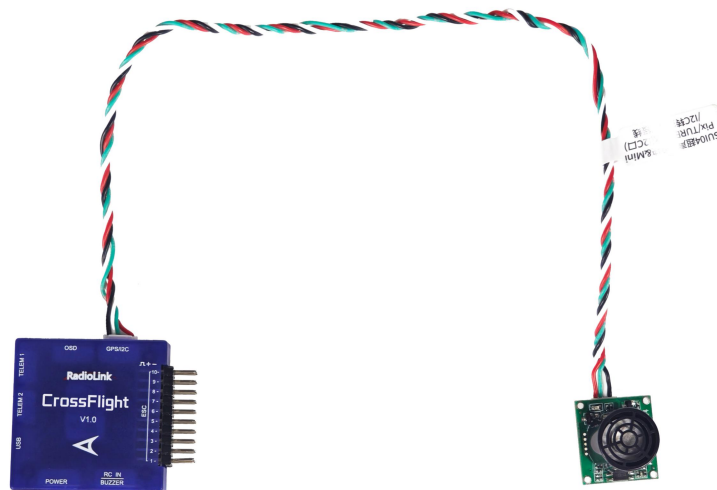
Chapter 2. Alt-Hold Function	2
2.1 Button Functions of SU104	2
2.2 Parameter Setup	3
2.3 Data View	4
Chapter 3. Obstacle Avoidance	6
3.1 Button Setup	6
3.2 Parameter Setup	6
3.3 Set the Avoidance Distance and Avoidance Enable/disable	8
3.4 Data Display	10
Chapter 4. Collision Avoidance Upward	12
4.1 Button Setup	12
4.2 Parameter Setup	12
4.3 Data Display	14

The SUI04 module can realize Alt-hold, obstacle avoidance in four directions (front, rear, left and right), and upward collision avoidance. Here is how to set CrossFlight to work with SUI04.

Chapter 1. Connect SUI04 to CrossFlight

1.1 Connect SUI 04 to CrossFlight GPS port directly

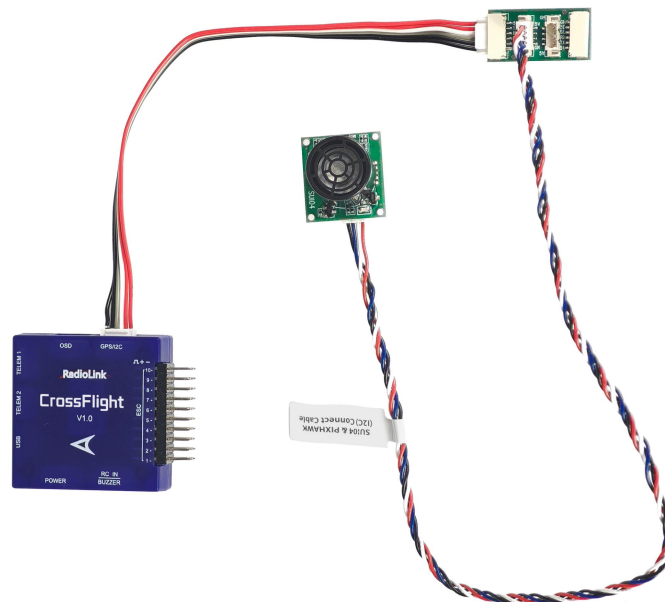
SUI04 comes with a cable to connect CrossFlight/Mini Pix flight controller (4 Pin to 6 Pin). The 4 Pin end is connected to SUI04, and the 6 Pin end is connected to the GPS port of CrossFlight, as shown below:



1.2 Connect SUI 04 to CrossFlight by I2C transfer board

CrossFlight comes with a I2C transfer board and its connect cable(6 Pin to 6 Pin). Connect one

end to the GPS port of CrossFlight, and the other end to the I2C transfer board. Then use the I2C/PIXHAWK connect cable that comes with SUI04 (4 Pin to 4 Pin) to connect one end to the I2C transfer board, and the other end to SUI04, as shown below:



Note: The I2C port of CrossFlight cannot be connected to more than 6 devices at the same time, otherwise data loss may occur.

Chapter 2. Alt-Hold Function

2.1 Button Functions of SUI04

For Alt-hold function, the direction of SUI04 downward can be setup by pressing the same button.

Each time you press the button, the module direction changes once. After pressing once, you need to wait for the module light to flash. When finished, press it a second time until the light of SUI04 flashes 5 times, which means the current direction of the module is downward.

2.2 Parameter Setup

1. Connect the flight controller to Mission Planner. Enter CONFIG--Full Parameter List. Search RNGFND1_ and change the value of RNGFND1_TYPE to 2. Click Write Params. Then power off the flight controller and restart it.

2. After reconnecting to Mission Planner, SUI04 can be recognized. As shown below:

Change the value of RNGFND1_MAX_CM to 450, RNGFND1_MIN_CM to 43 (cm), and RNGFND1_ORIENT to 25.

As shown below:

Name	Δ	Value	Default	Units	Options	Desc	Fav
RNGFND1_ADDR	0	0	0		0:127	This sets the bus address of the sensor, where applicable. Used for the I2C and DroneCAN sensors to allow for multiple sensors on different addresses.	<input type="checkbox"/>
RNGFND1_FUNCTION	0	0	0		0:Linear 1:Inverted	Control over what function is used to calculate distance. For a linear function, the distance is (voltage-offset)/scaling. For a inverted function the distance is (offset-voltage)/scaling. For a hyperbolic function the distance is scaling/(voltage-offset). The function sets the distance in meters.	<input type="checkbox"/>
RNGFND1_GNDCLEAR	10	10	10	cm	5:127	This parameter sets the expected range measurement(in cm) that the range finder should return when the vehicle is on the ground.	<input type="checkbox"/>
RNGFND1_MAX_CM	450	700	700	cm		Maximum distance in centimeters that rangefinder can reliably read	<input type="checkbox"/>
RNGFND1_MIN_CM	43	20	20	cm		Minimum distance in centimeters that rangefinder can reliably read	<input type="checkbox"/>
RNGFND1_OFFSET	0	0	0	V		Offset in volts for zero distance for analog rangefinders. Offset added to distance in centimeters for PWM lidars	<input type="checkbox"/>
RNGFND1_ORIENT	25	25	25		0:Forward 1:Downward	Orientation of rangefinder	<input type="checkbox"/>
RNGFND1_PIN	-1	-1	-1		-1:Not Used 0:1-15	Analog or PWM input pin that rangefinder is connected to. Airspeed ports can be used for Analog input, AUXOUT can be used for PWM input. When using analog pin 103, the maximum value of the input is 3.3V. For PWM input, the pin must be configured as a digital GPIO on the Micro-Controller for details.	<input type="checkbox"/>
RNGFND1_POS_X	0	0	0	m	-5:5	X position of the rangefinder in body frame. Positive X is forward of the origin. Use the zero range datum point if supplied.	<input type="checkbox"/>
RNGFND1_POS_Y	0	0	0	m	-5:5	Y position of the rangefinder in body frame. Positive Y is to the right of the origin. Use the zero range datum point if supplied.	<input type="checkbox"/>
RNGFND1_POS_Z	0	0	0	m	-5:5	Z position of the rangefinder in body frame. Positive Z is down from the origin. Use the zero range datum point if supplied.	<input type="checkbox"/>
RNGFND1_PWRRING	0	0	0	m	0:32767	This parameter sets the estimated terrain distance in meters above which the sensor will be put into a power saving mode (if available). A value of zero means power saving is not enabled	<input type="checkbox"/>
RNGFND1_RMTRIC	1	1	1		0:No 1:Yes	This parameter sets whether an analog rangefinder is ratiometric. Most analog rangefinders are ratiometric, meaning that their output voltage is influenced by the supply voltage. Some analog rangefinders (such as the SF/02) have their own internal voltage regulation, thus are not ratiometric.	<input type="checkbox"/>
RNGFND1_SCALING	3	3	3	m/V		Scaling factor between rangefinder reading and distance. For the linear and inverted functions this is in meters per volt. For the hyperbolic function the units are meter/Volts. For Maxbotix serial sonar this is unit conversion to meters.	<input type="checkbox"/>
RNGFND1_STOP_PIN	-1	-1	-1		-1:Not Used 0:1-15	Digital pin that enables/disables rangefinder measurement for the pwm rangefinder. A value of -1 means no pin. If this is set, then the pin is set to 1 to enable the rangefinder and set to 0 to disable it. This is used to enable powersaving when out of power. Some rangefinders will not stop, but use the Micro-Controller to have to determine the pin number for a pin.	<input type="checkbox"/>
RNGFND1_TYPE	2	0	0		0:None 1:Analog 2:M=40cm	Type of connected rangefinder	<input type="checkbox"/>

RNGFND1_MAX_CM is the maximum distance in centimeters that rangefinder can reliably read.

RNGFND1_MIN_CM is the minimum distance in centimeters that rangefinder can reliably read.

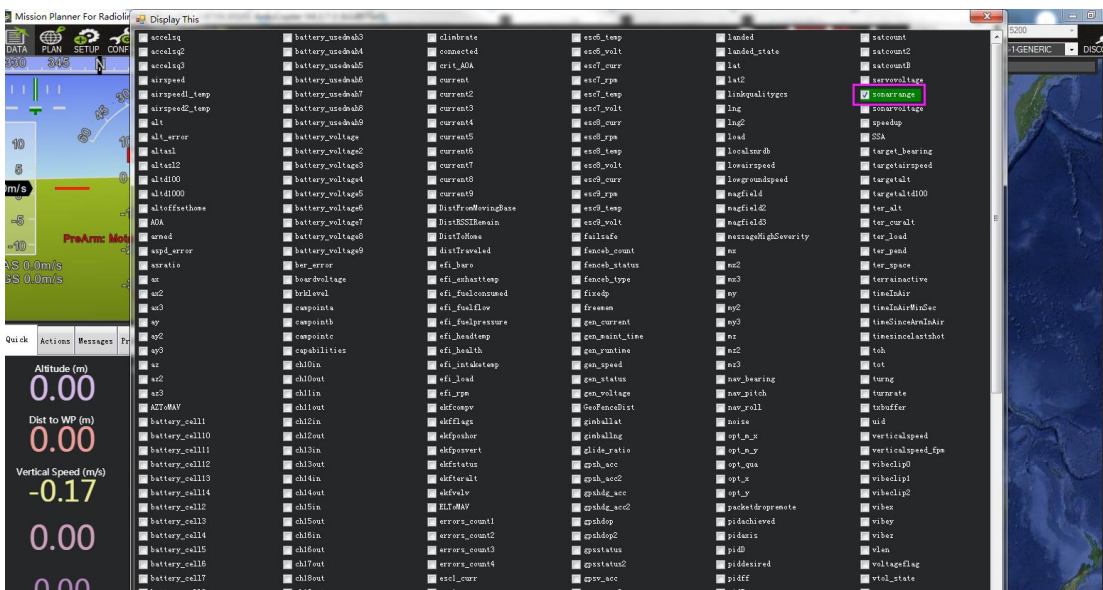
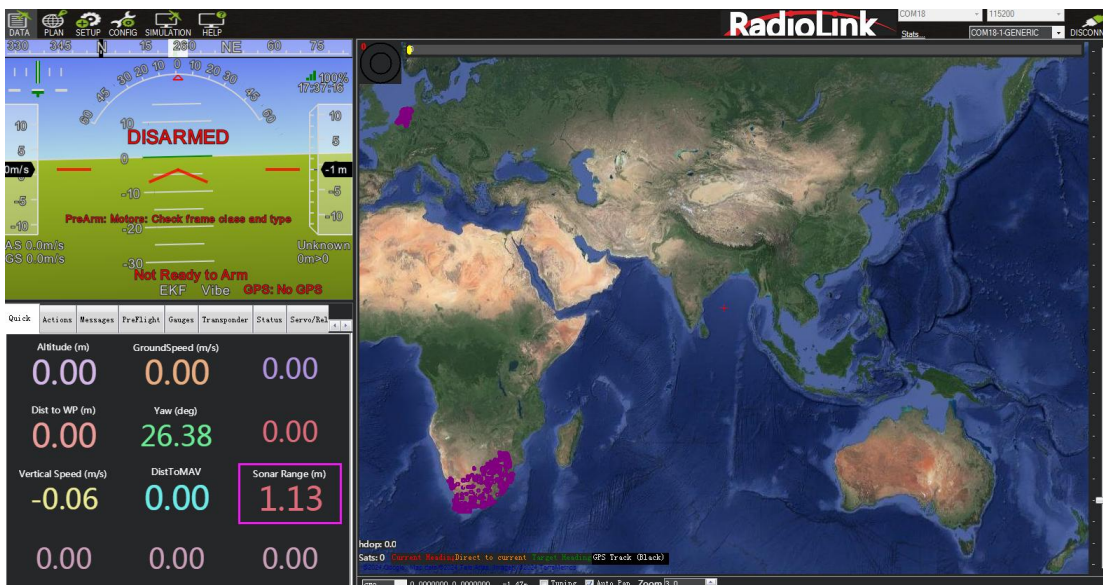
When the distance sent by SUI04 exceeds 43~450cm, the flight control will not recognize the distance

of SUI04, so it will achieve the alt-hold by the barometer.

2.3 Data View

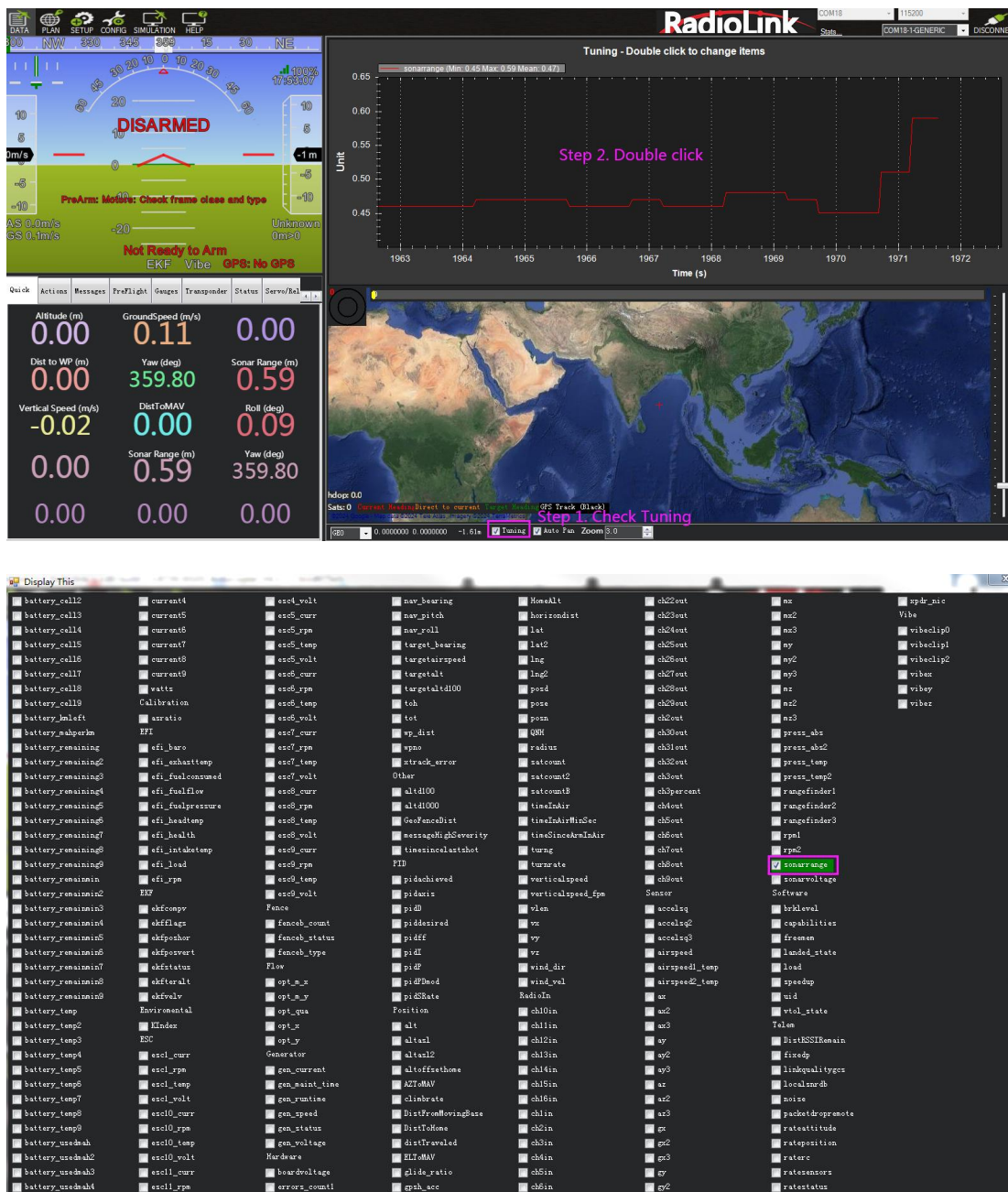
1. View ultrasonic data in the quick interface.

Connect the flight controller to Mission Planner. Double-click in the quick interface, and a large list will appear. Select sonarrange in the list, and the ultrasonic height data will be displayed.



2. View ultrasonic data in the Tuning interface.

Check the Tuning option in Mission Planner. Double-click the dynamic table, and select sonarrange in the list to display the dynamic waveform of ultrasonic data. As shown below:



Chapter 3. Obstacle Avoidance

3.1 Button Setup

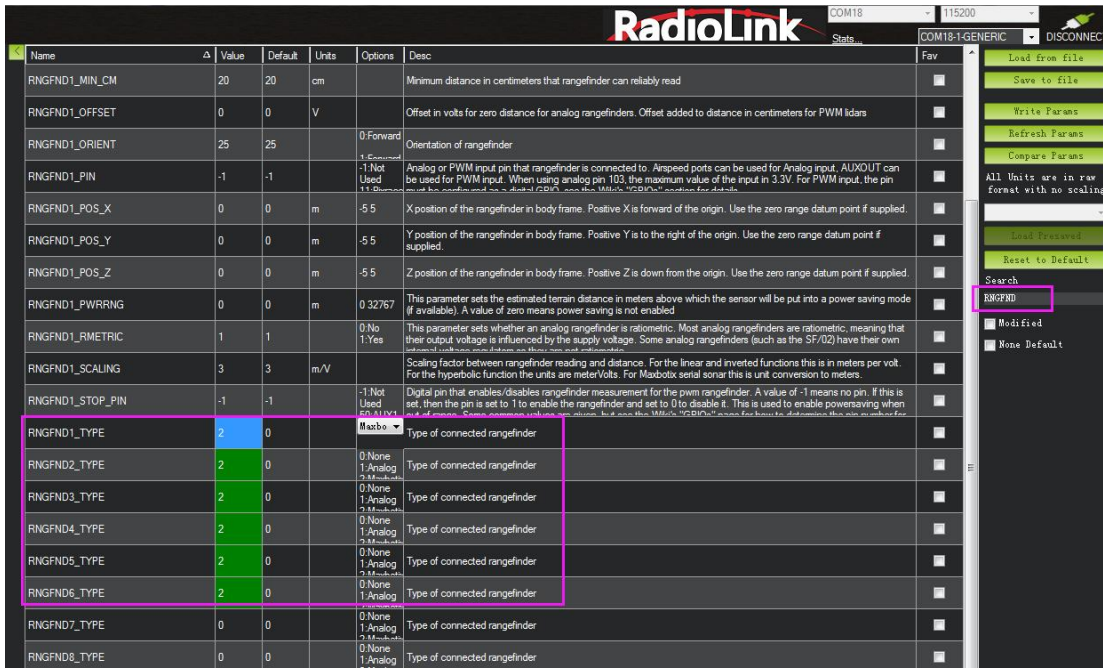
The SUI04 module can realize obstacle avoidance in four directions (front, rear, left and right).

The directions can be changed by pressing the button on SUI04. The default direction of the module is forward. Each time the button is pressed, the direction of the module changes clockwise, and the module LED flashes. Different flash frequencies means different directions: Once-Front, Twice-Right, 3 Times-Back, 4 Times-Left. After the direction is set, the module needs to be powered off and restarted.

3.2 Parameter Setup

1. Connect SUI04 to the flight controller. Search PRX1_TYPE in Full Parameter List and change the value to 4. Then search RNGFND in Full Parameter List and change the value of RNGFNDx_TYPE to 2 (x represents the ultrasonic serial number). Finally restart the flight controller. As shown below:

Name	Δ	Value	Default	Units	Options	Desc	Fav
PRX1_TYPE		4	0		None	What type of proximity sensor is connected	<input type="checkbox"/>



2. Search RNGFND1 in Full Parameter List. Modify RNGFND1_ADDR to 116, RNGFND1_MAX_CM to 450, RNGFND1_MIN_CM to 43, and RNGFND1_ORIENT to 0. (0 indicates that the ultrasonic direction is forward) As shown below:

Name	Value	Default	Units	Options	Desc	Fav
RNGFND1_ADDR	116	0		0-127	This sets the bus address of the sensor, where applicable. Used for the I2C and DroneCAN sensors to allow for multiple sensors on different addresses.	■
RNGFND1_FUNCTION	0	0		0:Linear 1:Inverted	Control over what function is used to calculate distance. For a linear function, the distance is (voltage-offset)/scaling. For an inverted function the distance is (offset-voltage)/scaling. For a hyperbolic function the distance is scaling/(voltage-offset). The functions return the distance in meters.	■
RNGFND1_GNDCLEAR	10	10	cm	5-127	This parameter sets the expected range measurement (in cm) that the range finder should return when the vehicle is on the ground.	■
RNGFND1_MAX_CM	450	700	cm		Maximum distance in centimeters that rangefinder can reliably read	■
RNGFND1_MIN_CM	43	20	cm		Minimum distance in centimeters that rangefinder can reliably read	■
RNGFND1_OFFSET	0	0	V		Offset in volts for zero distance for analog rangefinders. Offset added to distance in centimeters for PWM lidars	■
RNGFND1_ORIENT	0	25		0:Forward 1:Forward-Rtg	Orientation of rangefinder	■

3. Search RNGFND2 in Full Parameter List. Modify RNGFND2_ADDR to 113, RNGFND2_MAX_CM to 450, RNGFND2_MIN_CM to 43, and RNGFND2_ORIENT to 2 (2 indicates that the ultrasonic direction is to the right) As shown below:

Name	Value	Default	Units	Options	Desc	Fav
RNGFND2_ADDR	113	0		0-127	This sets the bus address of the sensor, where applicable. Used for the I2C and DroneCAN sensors to allow for multiple sensors on different addresses.	■
RNGFND2_FUNCTION	0	0		0:Linear 1:Inverted	Control over what function is used to calculate distance. For a linear function, the distance is (voltage-offset)/scaling. For an inverted function the distance is (offset-voltage)/scaling. For a hyperbolic function the distance is scaling/(voltage-offset). The functions return the distance in meters.	■
RNGFND2_GNDCLEAR	10	10	cm	5-127	This parameter sets the expected range measurement (in cm) that the range finder should return when the vehicle is on the ground.	■
RNGFND2_MAX_CM	450	700	cm		Maximum distance in centimeters that rangefinder can reliably read	■
RNGFND2_MIN_CM	43	20	cm		Minimum distance in centimeters that rangefinder can reliably read	■
RNGFND2_OFFSET	0	0	V		Offset in volts for zero distance for analog rangefinders. Offset added to distance in centimeters for PWM lidars	■
RNGFND2_ORIENT	2	25		0:Forward 1:Forward-Rtg	Orientation of rangefinder	■

4. Search RNFND3 in Full Parameter List. Modify RNFND3_ADDR to 114, RNFND3_MAX_CM to 450, RNFND3_MIN_CM to 43, and RNFND3_ORIENT to 4 (4 indicates that the ultrasonic direction is backward) As shown below:

RNFND3_ADDR	114	0		0 127	This sets the bus address of the sensor, where applicable. Used for the I2C and DroneCAN sensors to allow for multiple sensors on different addresses.	■
RNFND3_FUNCTION	0	0		0 Linear 1 Inverted 2.54 cm scale	Control over what function is used to calculate distance. For a linear function, the distance is (voltage-offset)/scaling. For an inverted function the distance is (offset-voltage)/scaling. For a hyperbolic function the distance is scaling/(voltage-offset). The functions return the distance in meters.	■
RNFND3_GNDCLEAR	10	10	cm	5 127	This parameter sets the expected range measurement (in cm) that the range finder should return when the vehicle is on the ground.	■
RNFND3_MAX_CM	450	700	cm		Maximum distance in centimeters that rangefinder can reliably read	■
RNFND3_MIN_CM	43	20	cm		Minimum distance in centimeters that rangefinder can reliably read	■
RNFND3_OFFSET	0	0	V		Offset in volts for zero distance for analog rangefinders. Offset added to distance in centimeters for PWM lidars	■
RNFND3_ORIENT	4	25		0 Forward 1 Forward-Rtg	Orientation of rangefinder	■

5. Search RNFND4 in Full Parameter List. Modify RNFND4_ADDR to 115, RNFND4_MAX_CM to 450, RNFND4_MIN_CM to 43, and RNFND4_ORIENT to 6 (6 indicates that the ultrasonic direction is to the left) As shown below:

RNFND4_ADDR	115	0		0 127	This sets the bus address of the sensor, where applicable. Used for the I2C and DroneCAN sensors to allow for multiple sensors on different addresses.	■
RNFND4_FUNCTION	0	0		0 Linear 1 Inverted 2.54 cm scale	Control over what function is used to calculate distance. For a linear function, the distance is (voltage-offset)/scaling. For an inverted function the distance is (offset-voltage)/scaling. For a hyperbolic function the distance is scaling/(voltage-offset). The functions return the distance in meters.	■
RNFND4_GNDCLEAR	10	10	cm	5 127	This parameter sets the expected range measurement (in cm) that the range finder should return when the vehicle is on the ground.	■
RNFND4_MAX_CM	450	700	cm		Maximum distance in centimeters that rangefinder can reliably read	■
RNFND4_MIN_CM	43	20	cm		Minimum distance in centimeters that rangefinder can reliably read	■
RNFND4_OFFSET	0	0	V		Offset in volts for zero distance for analog rangefinders. Offset added to distance in centimeters for PWM lidars	■
RNFND4_ORIENT	6	25		0 Forward 1 Forward-Rtg	Orientation of rangefinder	■

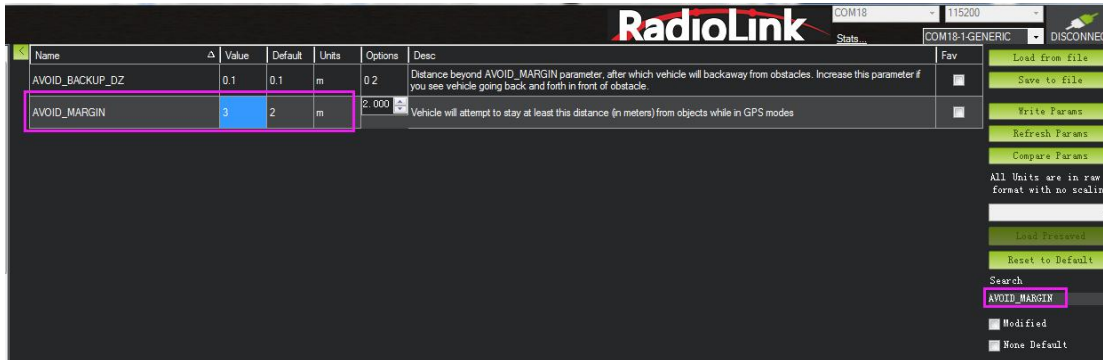
6. Click Write Params. Then power off the flight controller and restart it. After reconnecting to Mission Planner, SUI04 can be recognized.

3.3 Set the Avoidance Distance and Avoidance Enable/disable

1. The obstacle avoidance distance of SUI04 can be set by changing the value of AVOID_MARGIN. AVOID_MARGIN: Vehicle will attempt to stay at least this distance (in meters) from objects while in GPS mode.

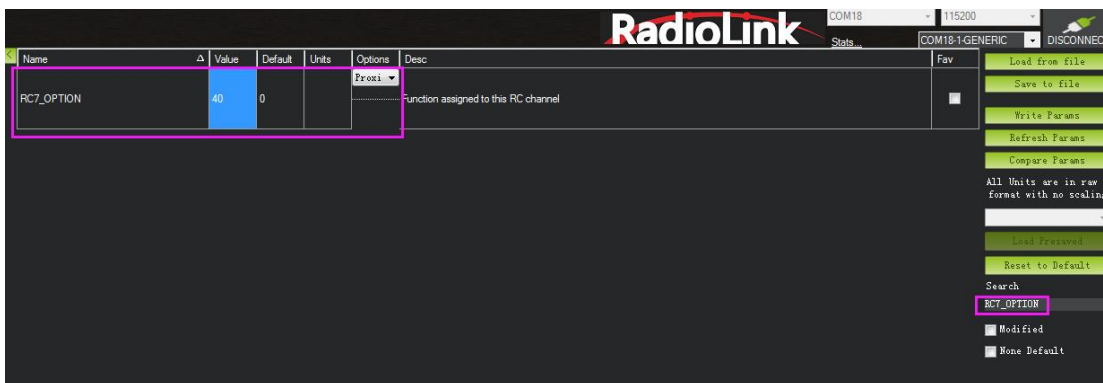
2. Parameter Settings

Search AVOID_MARGIN in Full Parameter List, and modify it to 3 (That is, 3 meters. The valid value is 1~10). Then click Write Params.



3. Set RC7_OPTION

Search RC7_OPTION in Full Parameter List, and modify it to 40. Then click Write Params. As shown below:



4. Transmitter Setup

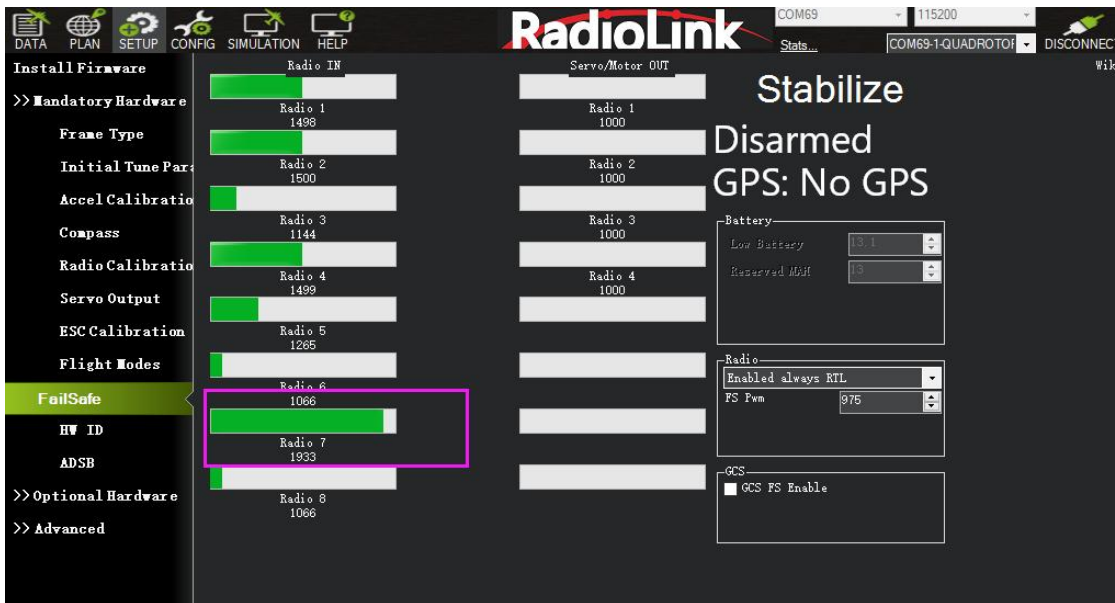
This setup is optional.

The avoidance function of flight controller is always automatically enabled in Loiter Mode by default and disabled in Stabilize Mode. If users prefer enabling/disabling the avoidance function by transmitter, setup the transmitter by following the below steps:

- 1) Choose a 2-position switch to control CH7.
- 2) Connect Mission Planner. Enter SETUP-- Mandatory Hardware--FailSafe. The PWM value of CH7

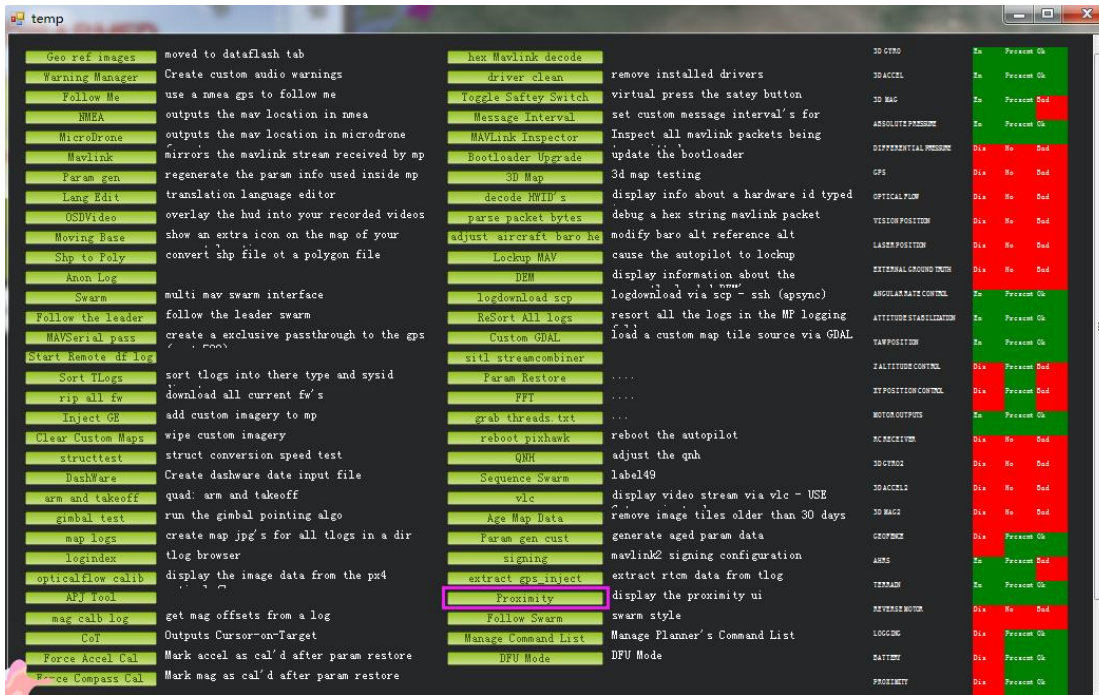
is shown.

- Toggle the switch of CH7. If the PWM value of CH7 is more than 1800, it means the avoidance function is enabled when the switch is at the position. If the PWM value of CH7 is less than 1800, it means the avoidance function is disabled when the switch is at the the position.

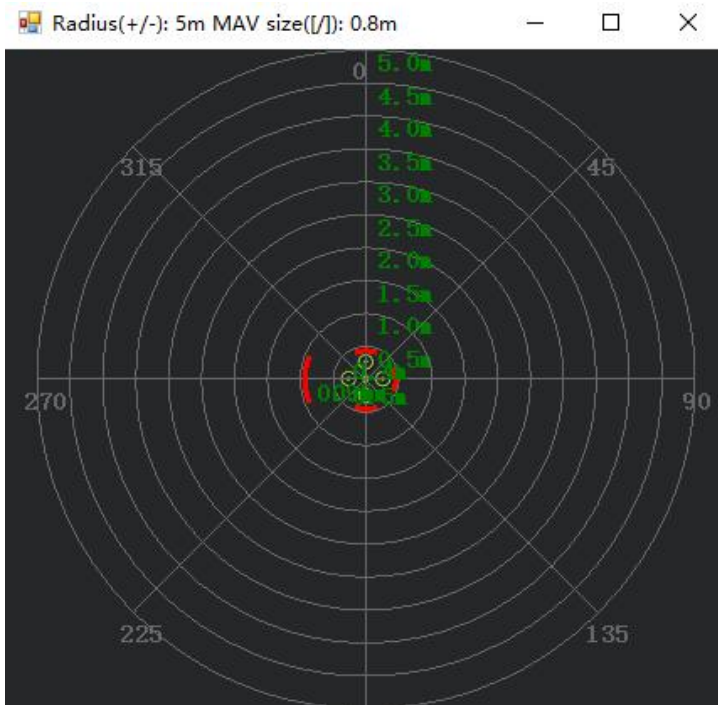


3.4 Data Display

Connect the flight controller to Mission Planner. Press CTRL+F on the keyboard, and click Proximity in the pop-up window. As shown below:



Ultrasound data can be displayed in a pop-up window, as shown below:



Chapter 4. Collision Avoidance Upward

4.1 Button Setup

The collision avoidance upward function is the same as the obstacle avoidance function, the direction of SUI04 upward can be setup by pressing the same button. Press the button 6 times and the LED flashes 6 times, and the direction of SUI04 is set upward. The corresponding collision avoidance distance can be set by the value of `AVOID_MARGIN` as the previous steps instructed.

4.2 Parameter Setup

1. Connect SUI04 to the flight controller. Search `PRX1_TYPE` in Full Parameter List and change

the value to 4. Then search RNGFND in Full Parameter List and change the value of RNGFND_x_TYPE to 2 (x represents the ultrasonic serial number). Finally restart the flight controller. As shown

below:

2. Search RNGFND in Full Parameter List. Modify RNGFND_x_ADDR (x represents the ultrasonic serial number) to 117, RNGFND_x_MAX_CM to 450, RNGFND_x_MIN_CM to 43, and RNGFND_x_ORIENT to 24. (24 indicates that the ultrasonic direction is forward) As shown below:

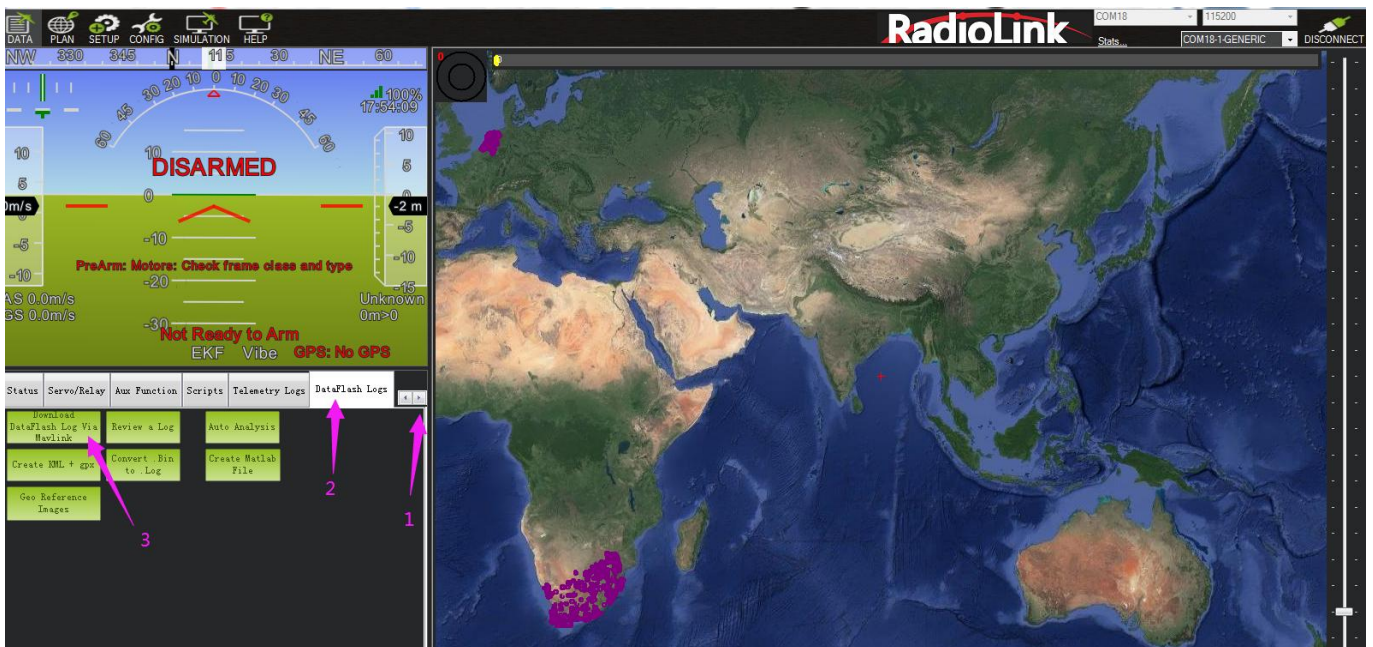
Name	Δ	Value	Default	Units	Options	Desc	Fav
RNGFND6_ADDR		117	0		0 127	This sets the bus address of the sensor, where applicable. Used for the I2C and DroneCAN sensors to allow for multiple sensors on different addresses.	
RNGFND6_FUNCTION		0	0		0:Linear 1:Inverted	Control over what function is used to calculate distance. For a linear function, the distance is (voltage-offset)/scaling. For a inverted function the distance is (offset-voltage)/scaling. For a hyperbolic function the distance is scaling/(voltage-offset). The 0 voltage return the distance is custom.	
RNGFND6_GNDCLEAR		10	10	cm	5 127	This parameter sets the expected range measurement(in cm) that the range finder should return when the vehicle is on the ground.	
RNGFND6_MAX_CM		450	700	cm		Maximum distance in centimeters that rangefinder can reliably read	
RNGFND6_MIN_CM		43	20	cm		Minimum distance in centimeters that rangefinder can reliably read	
RNGFND6_OFFSET		0	0	V		Offset in volts for zero distance for analog rangefinders. Offset added to distance in centimeters for PWM lidars	
RNGFND6_ORIENT		24	25		0:Forward 1:Forward	Orientation of rangefinder	
RNGFND6_PIN		-1	-1		-1:Not Used	Analog or PWM input pin that rangefinder is connected to. Aispeed ports can be used for Analog input, AUXOUT can be used for PWM input. When using analog pin 103, the maximum value of the input in 3.3V. For PWM input, the pin must be configured as a digital GPIO, see the Micro "GPIO" section for details.	

4.3 Data Display

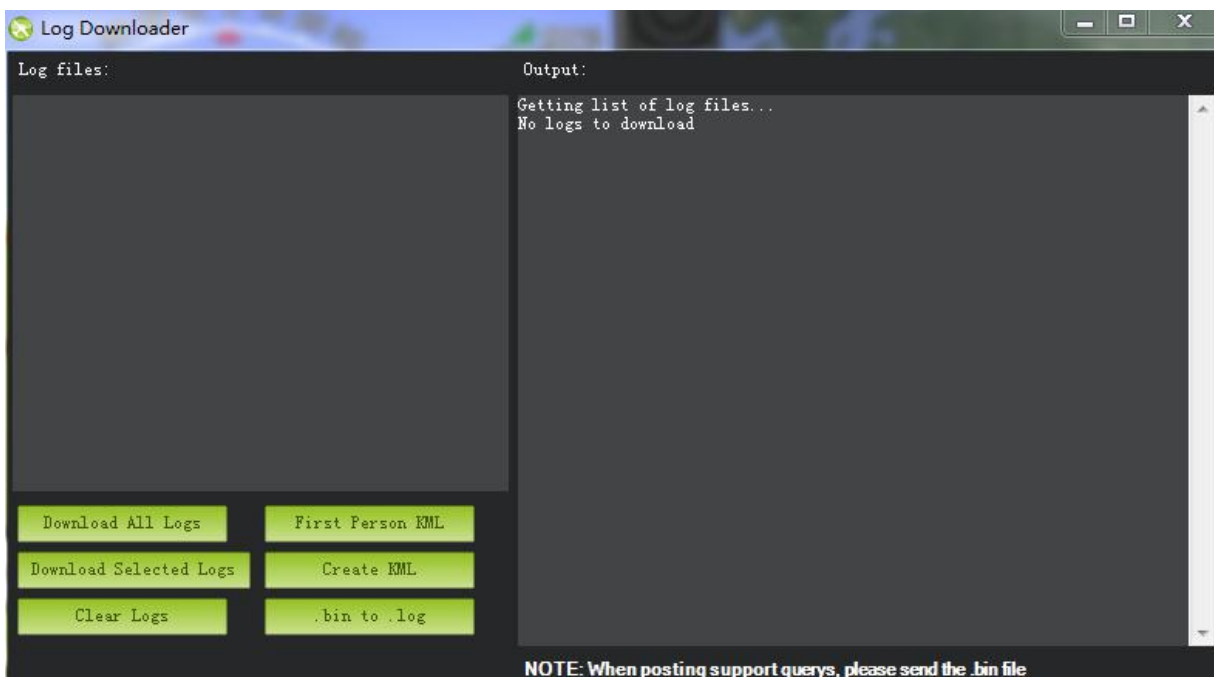
As only the horizontal distances are available on the data check interface, upward data can only be checked on DataFlash Logs. The steps are as follows:

1. DataFlash Logs Download

Connect the flight controller to Mission Planner and follow the below steps to download DataFlash Logs.



Click the logs you want to view, and click Download these logs to download the selected logs.

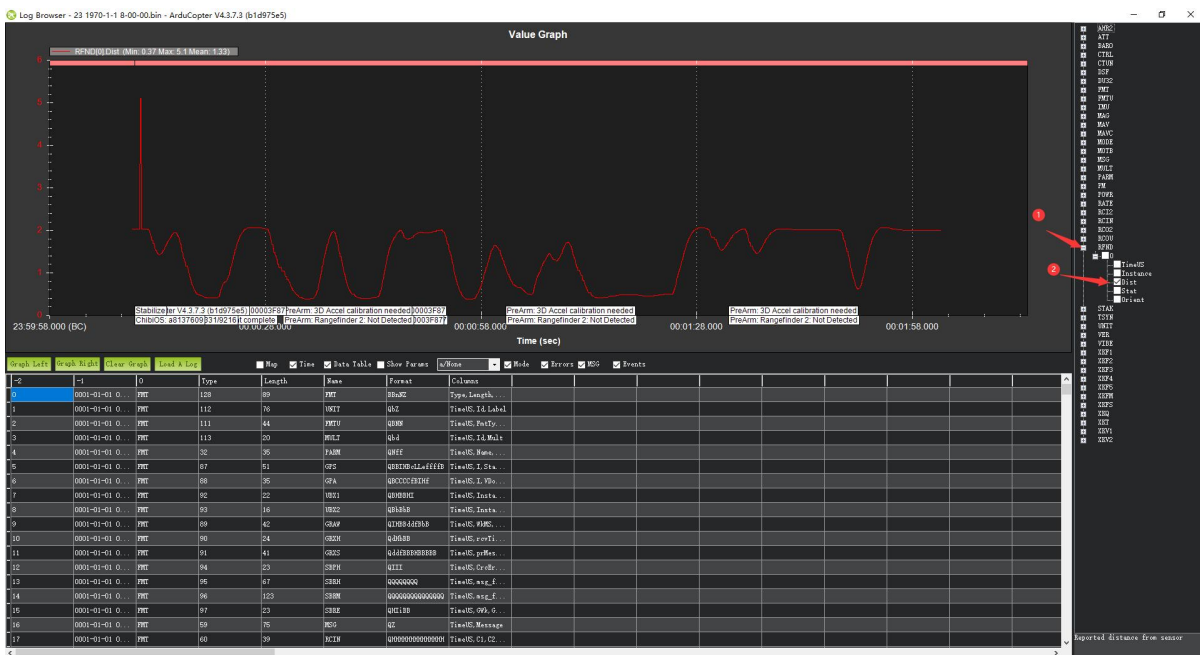


2. Log Check

Click Review a Log and open the log.



Follow steps 1 and 2 in the picture below.



The data shown in the chart is the distance of objects detected by SUI04.