

A560 3D Fixed Wing

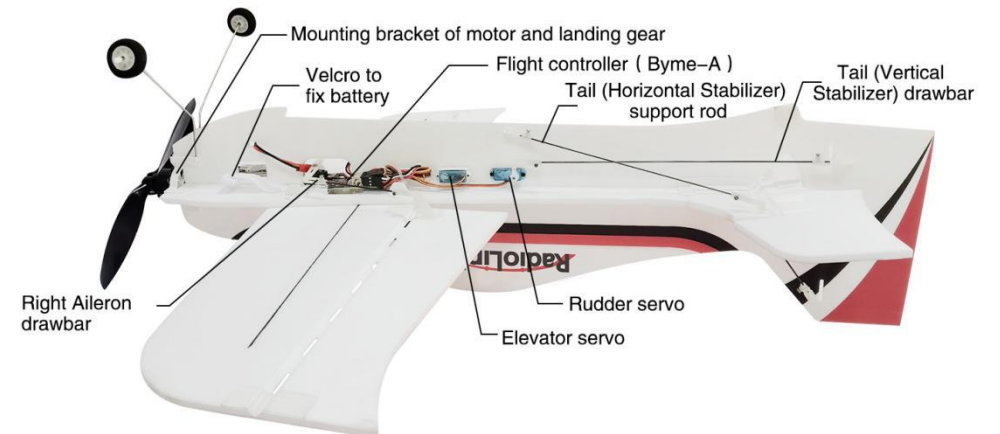
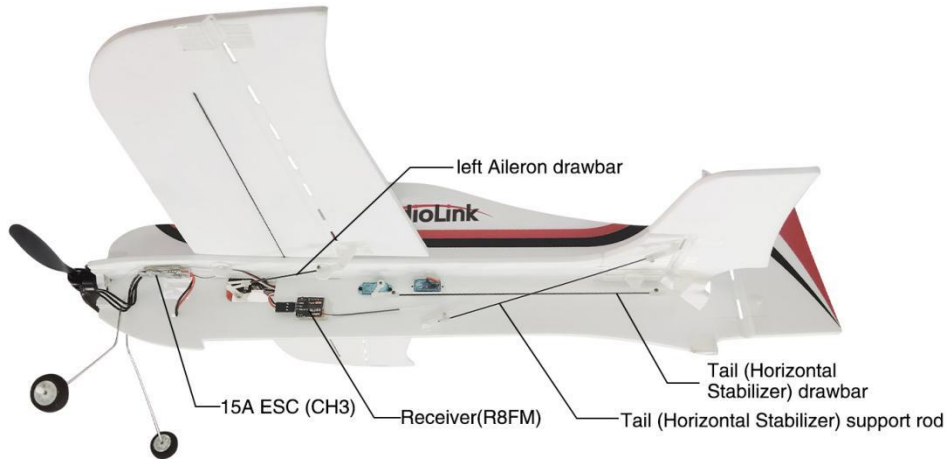
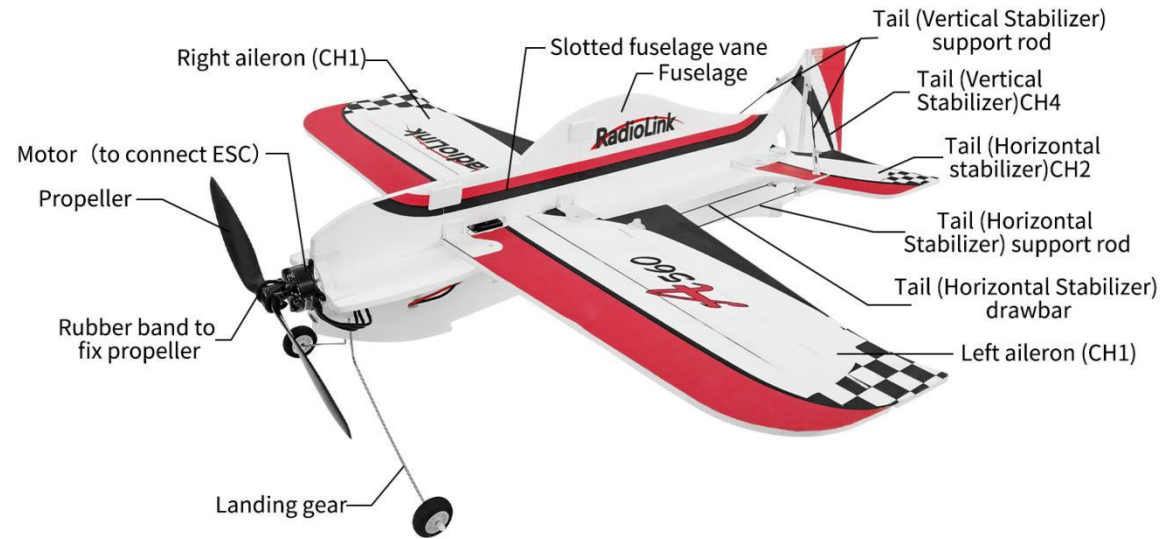
Vertical Flight with 1 Switch Assembly & Disassembly Instruction

All electronic components of A560 are already set. If it's the RTF version(with transmitter T8S and receiver packed), all you need to do after unpacking the box is to assemble the wing and tail (horizontal stabilizer), which is easy and fast.

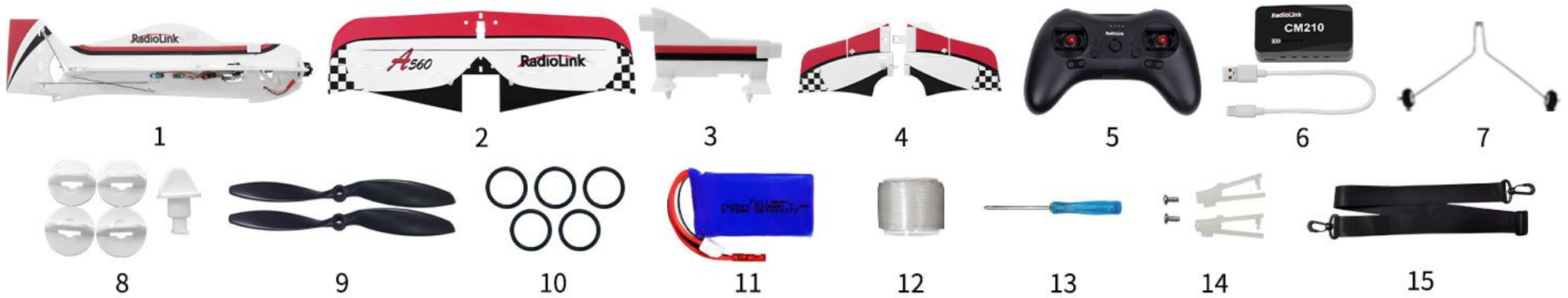
Note: If it is the PNP version(without transmitter T8S or receiver packed), please follow the instruction manual of A560 to set channel 5 and channel 7 in your transmitter.



A560 Introduction:



A560 Spare Part List:



- 1.Fuselage 2.Wing 3.Slotted fuselage vane 4.Tail (Horizontal Stabilizer) 5.T8S transmitter 6.Charger 7.Landing gear 8.Button to fix aileron/tail
9.Propeller 10.Rubber band to fix prop 11.LiPo battery 12.Fiber tape 13.Cross screwdriver 14.Clasps for drawbar/support rod 15.Bag shoulder strap

A560 Assembly Steps:

1.Install the wing



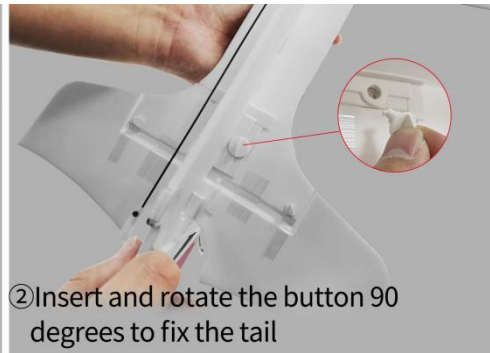
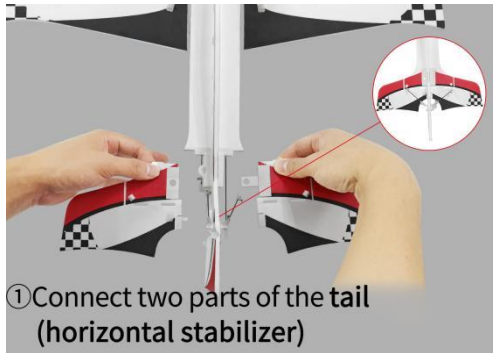
① Remove the slotted fuselage vane

② Install the wing

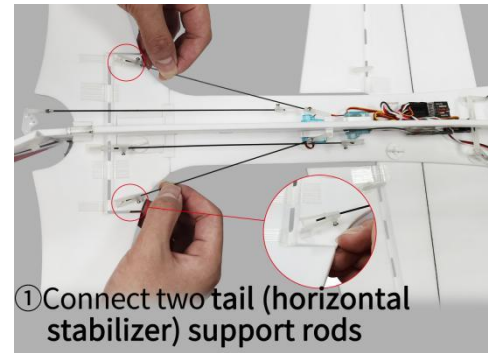
③ Insert the slotted fuselage vane

④ Insert and rotate 4 buttons 90 degrees to fix the wing

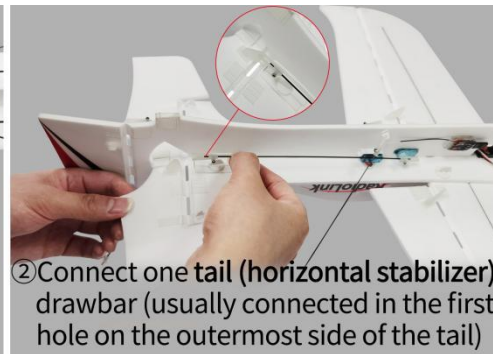
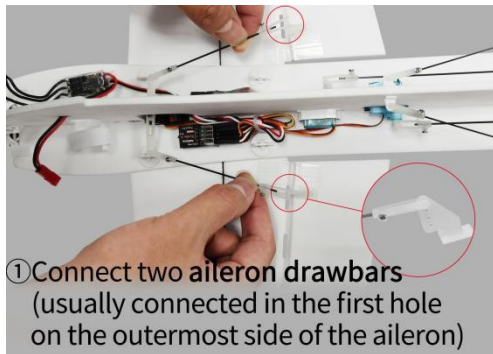
2. Install the tail (horizontal stabilizer)



3. Connect tail support rods



4. Connect aileron and tail drawbars



5. Install the landing gear



6. Install the propeller



Please scan the code to view A560 tutorials



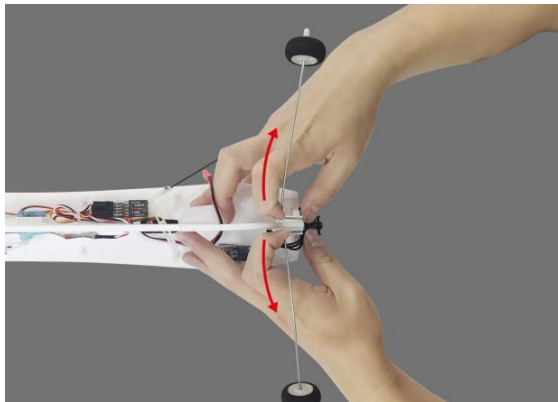
A560 Disassembly Steps:

After the flight, please disconnect the battery first, and then refer to the above assembly steps to disassemble the parts of A560 in turn. The disassembly steps are as follows:

1. Disassemble the propeller.
2. Disassemble the landing gear. Please see Note①
3. Disassemble the the drawbars and support rods. Please see Note②
4. Diassemble the buttons to fix the wing. Remove the slotted fuselage vane and wing. Insert the slotted fuselage vane back.
5. Diassemble the button to fix the tail. Remove the two parts of the tail (horizontal stabilizer).
6. Arrange all the spare parts and put them into the bag in turn. Keep all drawbars and support rods parallel to the fuselage when packing the fuselage in the bag. Please see Note③

Disassembly Notes:

① When disassembling the landing gear, please push the two metal rods of the landing gear in opposite directions at the same time, and then push the metal rods to make it out of the slot.



② When disassembling the drawbars or support rods, please put the screwdriver in the middle gap of the clasp, and then pry it.



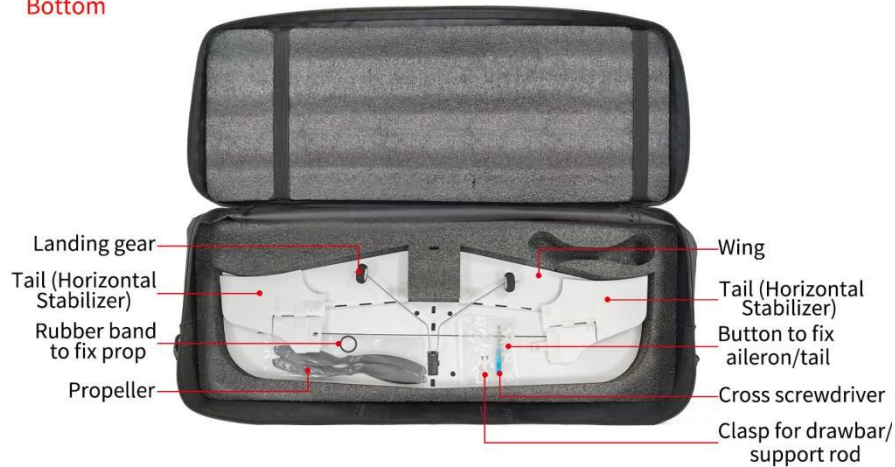
③ when packing the fuselage in the bag, please keep all drawbars and support rods parallel to the fuselage to avoid damage to the drawbar/rod caused by improper placement.



A560 Packing Steps:

After the disassembly, please pack the parts of the A560 in the bag as shown in the picture below.

Bottom



Top



T8S Transmitter Setup:

Phase Setup : Set the direction of channel 3 to Reverse, and other channels to Normal.

Flight Mode Switch : There are six flight modes in A560. Flight modes are set by CH5(3-way switch SWB) and CH7(3-way switch SWA) as below:



Mode 2

