

A560 3D Fixed Wing

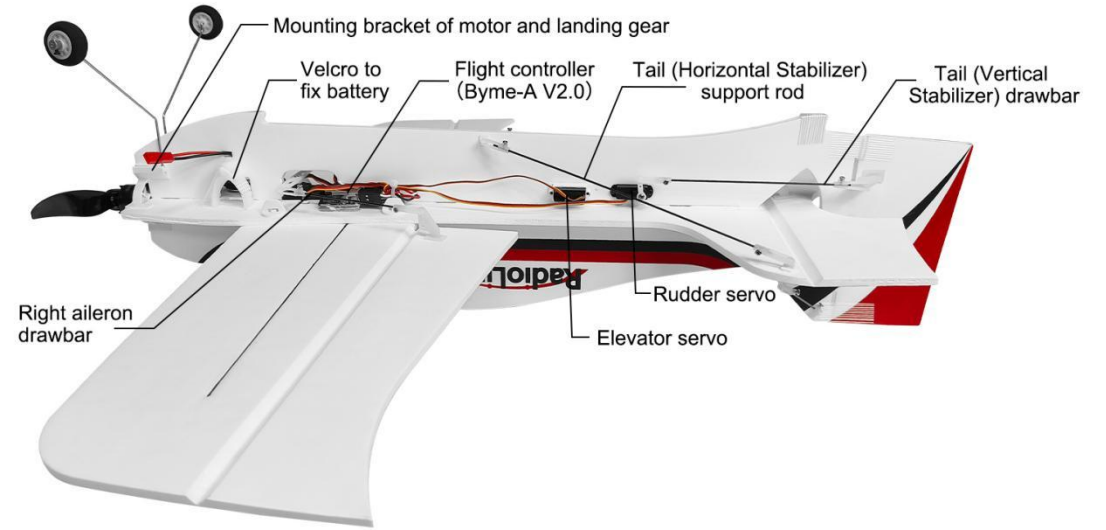
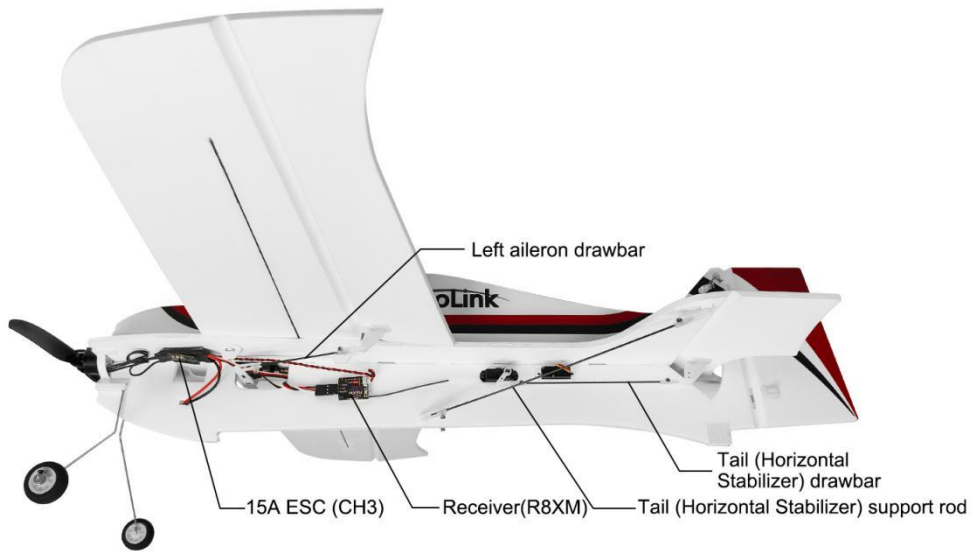
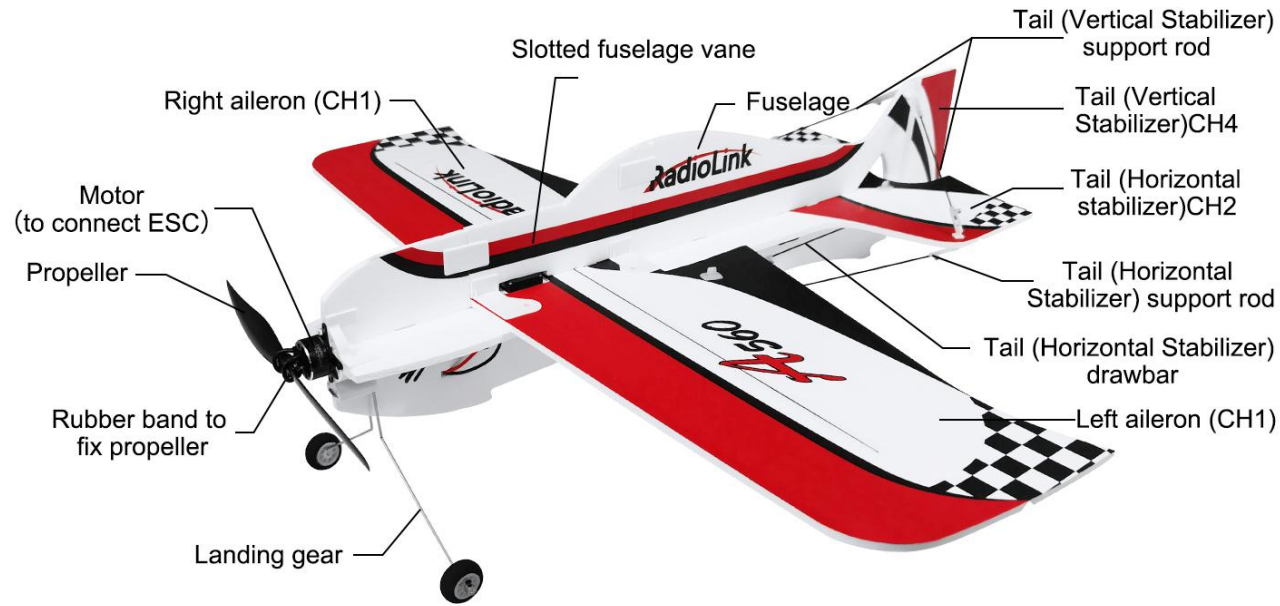
Vertical Flight with 1 Switch
Assembly & Disassembly Instruction



All electronic components of A560 are already set. If it's the RTF version(with transmitter T8S and receiver packed), all you need to do after unpacking the box is to assemble the wing, and then fly it.

Note: If it is the PNP version(without transmitter T8S and receiver packed), please follow the instruction manual of A560 to set channel 5 and channel 7 in your transmitter.

A560 Introduction:



RTF A560 Spare Part List:

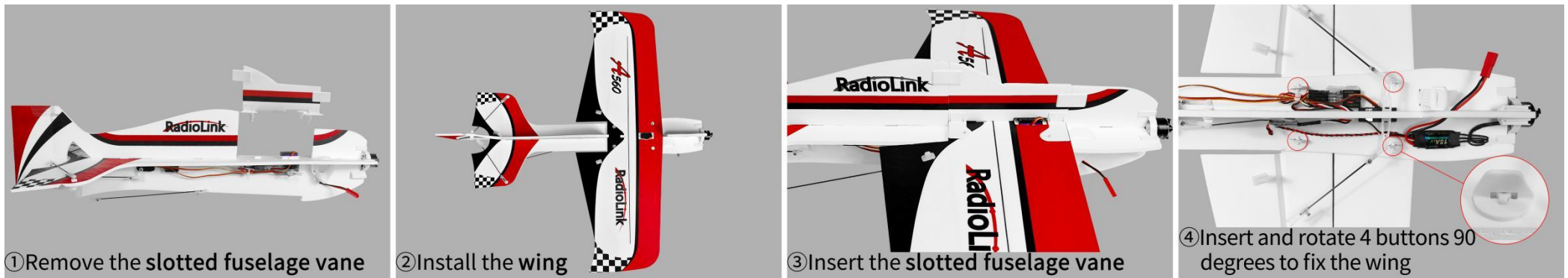


- 1.Fuselage 2.Wing 3.Slotted fuselage vane 4.T8S transmitter 5.CM210 charger 6.Landing gear 7.Button to fix wing 8.Rubber band to fix propeller
9.Propeller 10.LiPo battery 11.Fiber tape 12.Cross screwdriver 13.Spare clasp for drawbar/support rod 14.Spare servo arm 15.Bag shoulder strap

Note: Please refer to the sales interface for the actual spare part list.

A560 Assembly Steps:

1. Install the wing



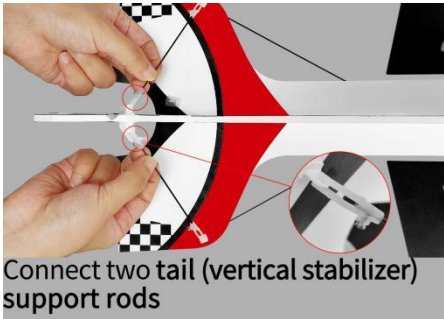
① Remove the slotted fuselage vane

② Install the wing

③ Insert the slotted fuselage vane

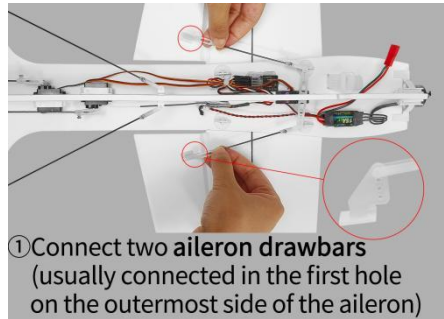
④ Insert and rotate 4 buttons 90 degrees to fix the wing

2. Connect tail support rods



Connect two tail (vertical stabilizer) support rods

3. Connect aileron drawbars



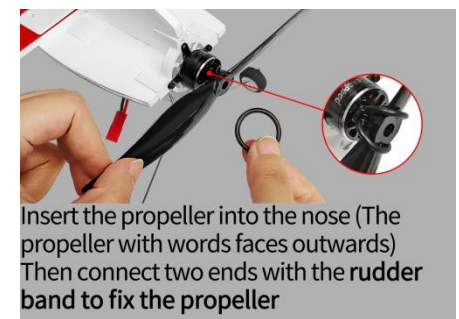
① Connect two aileron drawbars (usually connected in the first hole on the outermost side of the aileron)

4. Install the landing gear



Push the landing gear back along the slot until it is fully seated

5. Install the propeller



Insert the propeller into the nose (The propeller with words faces outwards) Then connect two ends with the rudder band to fix the propeller

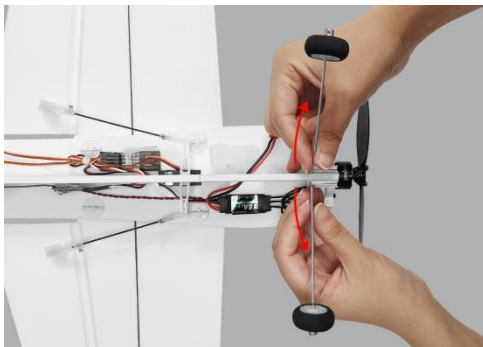
A560 Disassembly Steps:

After the flight, please disconnect the battery first, and then refer to the above assembly steps to disassemble the parts of A560 in turn. The disassembly steps are as follows:

1. Disassemble the propeller and landing gear. Please see Note①
2. Disassemble the the drawbars and tail support rods. Please see Note②
3. Diassemble the buttons to fix the wing. Remove the slotted fuselage vane and wing. Insert the slotted fuselage vane back.
4. Arrange all the spare parts and put them into the bag in turn. Keep all drawbars and rods parallel to the fuselage when packing it. Please see Note③

Disassembly Notes:

① When disassembling the landing gear, please push the two metal rods of the landing gear in opposite directions at the same time, and then push the metal rods to make it out of the slot.



② When disassembling the drawbars or support rods, please put the screwdriver in the middle gap of the clasp, and then pry it.



③ when packing the fuselage in the bag, please keep all drawbars and support rods parallel to the fuselage to avoid damage to the drawbar/rod caused by improper placement.



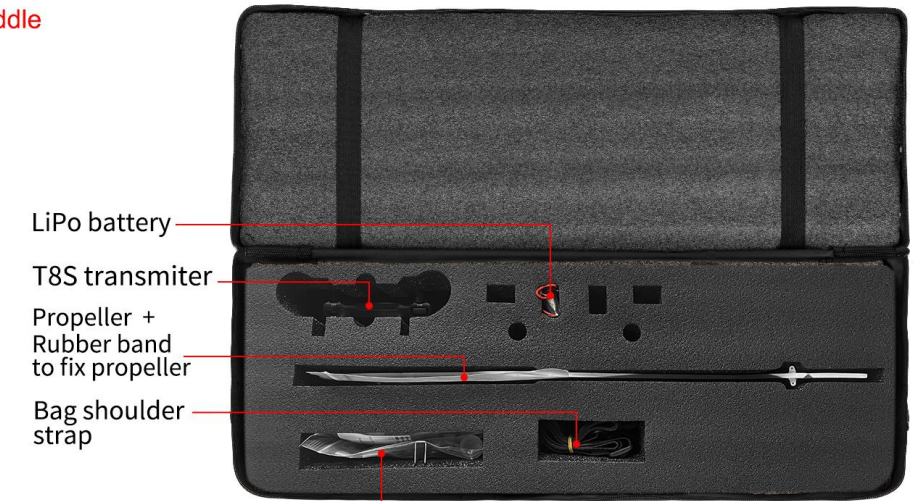
A560 Packing Steps:

After the disassembly, please pack the parts of the A560 in the bag as shown in the picture below.

Bottom



Middle



CM210 charger + Landing gear + Button to fix aileron + Fiber tape + Cross screwdriver + Spare clasp for drawbar/support rod + Spare servo arm

Top

